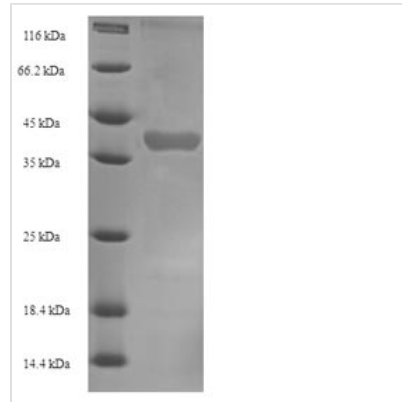




Recombinant Mouse Kallikrein 1-related peptidase b22 (Klk1b22)

Product Code	CSB-EP325391MO
Relevance	Glandular kallikreins cleave Met-Lys and Arg-Ser bonds in kininogen to release Lys-bradykinin.
Abbreviation	Recombinant Mouse Klk1b22 protein
Storage	The shelf life is related to many factors, storage state, buffer ingredients, storage temperature and the stability of the protein itself. Generally, the shelf life of liquid form is 6 months at -20°C/-80°C. The shelf life of lyophilized form is 12 months at -20°C/-80°C.
Uniprot No.	P15948
Alias	Beta-NGF-endorpeptidase;Epidermal growth factor-binding protein type A ;EGF-BP AGlandular kallikrein K22 ;mGK-22Nerve growth factor beta chain endopeptidaseTissue kallikrein 22
Product Type	Recombinant Protein
Immunogen Species	Mus musculus (Mouse)
Purity	≥ 90% as determined by SDS-PAGE.
Sequence	ILGGFKCEKNSQPWQVAVYYLDEYLCGGVLLDRNWWVLTAAHCYEDKYNIWLG KNKLFQDEPSAQHRLVSKSFPHPDFNMSLLQSVPTGADLSNDLMLLRLSKPAD ITDVVKPIDLPTTEPKLGSTCLASGWGSINQLIYQNPNDLQCVSIKLPNEVCVK AHILKVTDVMLCAGEMNGGKDTCKGDSGGPLICDGVLQGITSWGSTPCGEPN APAIYTKLIKFTSWIKDTMAKNP
Research Area	Others
Source	E.coli
Target Names	Klk1b22
Expression Region	25-259aa
Notes	Repeated freezing and thawing is not recommended. Store working aliquots at 4°C for up to one week.
Tag Info	N-terminal 6xHis-SUMO-tagged
Mol. Weight	41.8kDa
Protein Length	Full Length of Mature Protein
Image	



(Tris-Glycine gel) Discontinuous SDS-PAGE (reduced) with 5% enrichment gel and 15% separation gel.

Reconstitution

We recommend that this vial be briefly centrifuged prior to opening to bring the contents to the bottom. Please reconstitute protein in deionized sterile water to a concentration of 0.1-1.0 mg/mL. We recommend to add 5-50% of glycerol (final concentration) and aliquot for long-term storage at -20°C/-80°C. Our default final concentration of glycerol is 50%. Customers could use it as reference.

Shelf Life

The shelf life is related to many factors, storage state, buffer ingredients, storage temperature and the stability of the protein itself. Generally, the shelf life of liquid form is 6 months at -20°C/-80°C. The shelf life of lyophilized form is 12 months at -20°C/-80°C.