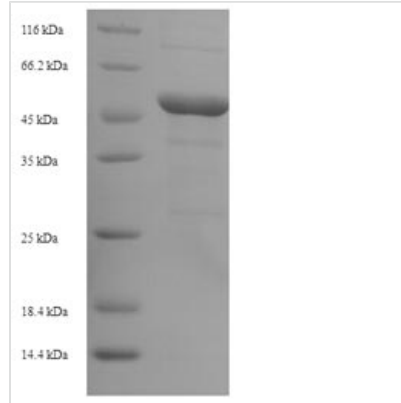


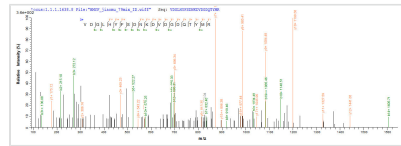


Recombinant Escherichia coli Outer membrane protein C (ompC)

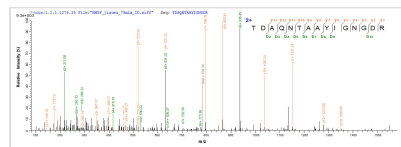
Product Code	CSB-EP356994ENV
Relevance	Forms pores that allow passive diffusion of small molecules across the outer mbrane.
Abbreviation	Recombinant E.coli ompC protein
Storage	The shelf life is related to many factors, storage state, buffer ingredients, storage temperature and the stability of the protein itself. Generally, the shelf life of liquid form is 6 months at -20°C/-80°C. The shelf life of lyophilized form is 12 months at -20°C/-80°C.
Uniprot No.	P06996
Alias	Outer membrane protein 1BPorin OmpC
Product Type	Recombinant Protein
Immunogen Species	Escherichia coli (strain K12)
Purity	≥ 90% as determined by SDS-PAGE.
Sequence	AEVYNKDGKLDLYGKVDGLHYFSDNKDVDGDQTYMRLGFKGETQVTDQLT GYGQWEYQIQGNSAENENNSWTRVAFAGLKFQDVGSFDYGRNYGVVYDVTS WTDVLPFEGGDTYGSDNFMQQRGNGFATYRNTDFFGLVDGLNFAVQYQGKN GNPSGEGFTSGVTNNGRDALRQNGDGVGGSITYDYEGFGIGGAISSSKRTDA QNTAAYIGNGDRAETYTGGLKYDANNIYLAAQYTQTYNATRVGSLGWANKAQ NFEAVAQYQDFGLRPSLAYLQSKGKNLGRGYDDEDILKYVDVGATYYFNKN MSTYVDYKINLLDDNQFTRDAGINTDNIVALGLVYQF
Research Area	Others
Source	E.coli
Target Names	ompC
Expression Region	22-367aa
Notes	Repeated freezing and thawing is not recommended. Store working aliquots at 4°C for up to one week.
Tag Info	N-terminal 6xHis-SUMO-tagged
Mol. Weight	54.3kDa
Protein Length	Full Length of Mature Protein
Image	



(Tris-Glycine gel) Discontinuous SDS-PAGE (reduced) with 5% enrichment gel and 15% separation gel.



Based on the SEQUEST from database of E.coli host and target protein, the LC-MS/MS Analysis result of CSB-EP356994ENV could indicate that this peptide derived from E.coli-expressed Escherichia coli (strain K12) ompC.



Based on the SEQUEST from database of E.coli host and target protein, the LC-MS/MS Analysis result of CSB-EP356994ENV could indicate that this peptide derived from E.coli-expressed Escherichia coli (strain K12) ompC.

Reconstitution

We recommend that this vial be briefly centrifuged prior to opening to bring the contents to the bottom. Please reconstitute protein in deionized sterile water to a concentration of 0.1-1.0 mg/mL. We recommend to add 5-50% of glycerol (final concentration) and aliquot for long-term storage at -20°C/-80°C. Our default final concentration of glycerol is 50%. Customers could use it as reference.

Shelf Life

The shelf life is related to many factors, storage state, buffer ingredients, storage temperature and the stability of the protein itself. Generally, the shelf life of liquid form is 6 months at -20°C/-80°C. The shelf life of lyophilized form is 12 months at -20°C/-80°C.