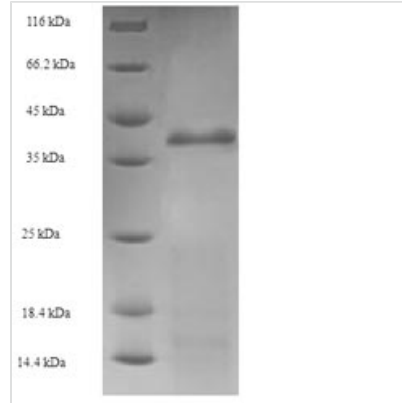




# Recombinant Escherichia coli Holliday junction ATP-dependent DNA helicase RuvA (ruvA)

|                          |  |
|--------------------------|--|
| <b>Product Code</b>      | CSB-EP359062ENV  |
| <b>Relevance</b>         | The RuvA-RuvB complex in the presence of ATP renatures cruciform structure in supercoiled DNA with palindromic sequence, indicating that it may promote strand exchange reactions in homologous recombination. RuvAB is a helicase that mediates the Holliday junction migration by localized denaturation and reannealing. RuvA stimulates, in the presence of DNA, the weak ATPase activity of RuvB. Binds both single- and double-stranded DNA (dsDNA). Binds preferentially to supercoiled rather than to relaxed dsDNA. |
| <b>Abbreviation</b>      | Recombinant E.coli ruvA protein  |
| <b>Storage</b>           | The shelf life is related to many factors, storage state, buffer ingredients, storage temperature and the stability of the protein itself. Generally, the shelf life of liquid form is 6 months at -20°C/-80°C. The shelf life of lyophilized form is 12 months at -20°C/-80°C.  |
| <b>Uniprot No.</b>       | P0A809   |
| <b>Product Type</b>      | Recombinant Protein  |
| <b>Immunogen Species</b> | Escherichia coli (strain K12)  |
| <b>Purity</b>            | ≥ 90% as determined by SDS-PAGE.   |
| <b>Sequence</b>          | MIGRLRGIIIEKQPPLVLIIEVGGVGYEVHMPMTCFYELPEAGQEAIIVFTHFVVRE<br>DAQLLYGFNKNKQERTLFKELIKTNGVGPKLALAILSGMSAQQFVNAVEREEVG<br>ALVKLPGIGKKAERLIVEMKDRFKGLHGDLFTPAAADLVLTSPASPATDDAEQE<br>AVAALVALGYKPKQEASRMVSKIARPDASSETLIREALRAAL  |
| <b>Research Area</b>     | Others   |
| <b>Source</b>            | E.coli   |
| <b>Target Names</b>      | ruvA   |
| <b>Expression Region</b> | 1-203aa  |
| <b>Notes</b>             | Repeated freezing and thawing is not recommended. Store working aliquots at 4°C for up to one week.  |
| <b>Tag Info</b>          | N-terminal 6xHis-SUMO-tagged   |
| <b>Mol. Weight</b>       | 38.1kDa  |
| <b>Protein Length</b>    | Full Length  |
| <b>Image</b>             |  |



(Tris-Glycine gel) Discontinuous SDS-PAGE (reduced) with 5% enrichment gel and 15% separation gel.

### Reconstitution

We recommend that this vial be briefly centrifuged prior to opening to bring the contents to the bottom. Please reconstitute protein in deionized sterile water to a concentration of 0.1-1.0 mg/mL. We recommend to add 5-50% of glycerol (final concentration) and aliquot for long-term storage at -20°C/-80°C. Our default final concentration of glycerol is 50%. Customers could use it as reference.

### Shelf Life

The shelf life is related to many factors, storage state, buffer ingredients, storage temperature and the stability of the protein itself. Generally, the shelf life of liquid form is 6 months at -20°C/-80°C. The shelf life of lyophilized form is 12 months at -20°C/-80°C.