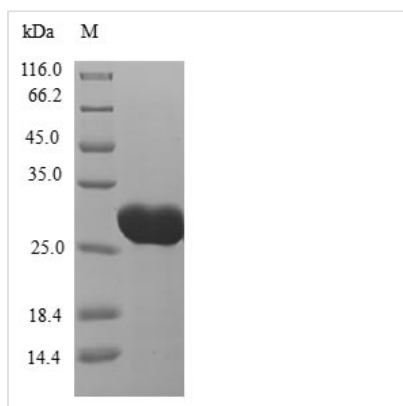




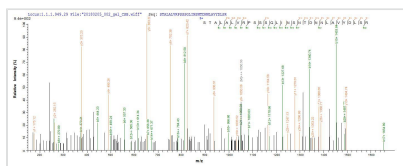
Recombinant Human Kita-kyushu lung cancer antigen 1 (CT83)

Product Code	CSB-EP711093HU
Abbreviation	Recombinant Human CT83 protein
Storage	The shelf life is related to many factors, storage state, buffer ingredients, storage temperature and the stability of the protein itself. Generally, the shelf life of liquid form is 6 months at -20°C/-80°C. The shelf life of lyophilized form is 12 months at -20°C/-80°C.
Uniprot No.	Q5H943
Alias	Cancer/testis antigen 83
Product Type	Recombinant Protein
Immunogen Species	Homo sapiens (Human)
Purity	Greater than 90% as determined by SDS-PAGE.
Sequence	MNFYLLASSILCALIVFWKYRRFQRNTGEMSSNSTALALVRPSSSGLINSNTD NNLAVYDLRSRDLNFPHSIARQKRILVNLMSVENKLVELEHTLLSKGFRGASP HRKST
Research Area	others
Source	E.coli
Target Names	CT83
Expression Region	1-113aa
Notes	Repeated freezing and thawing is not recommended. Store working aliquots at 4°C for up to one week.
Tag Info	N-terminal 6xHis-B2M-tagged
Mol. Weight	26.8kDa
Protein Length	Full Length

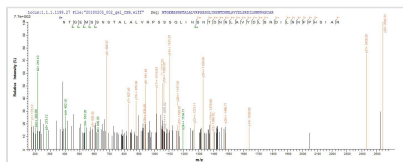
Image



(Tris-Glycine gel) Discontinuous SDS-PAGE (reduced) with 5% enrichment gel and 15% separation gel.



Based on the SEQUEST from database of E.coli host and target protein, the LC-MS/MS Analysis result of CSB-EP711093HU could indicate that this peptide derived from E.coli-expressed Homo sapiens (Human) CT83.



Based on the SEQUEST from database of E.coli host and target protein, the LC-MS/MS Analysis result of CSB-EP711093HU could indicate that this peptide derived from E.coli-expressed Homo sapiens (Human) CT83.

Reconstitution

We recommend that this vial be briefly centrifuged prior to opening to bring the contents to the bottom. Please reconstitute protein in deionized sterile water to a concentration of 0.1-1.0 mg/mL. We recommend to add 5-50% of glycerol (final concentration) and aliquot for long-term storage at -20°C/-80°C. Our default final concentration of glycerol is 50%. Customers could use it as reference.

Shelf Life

The shelf life is related to many factors, storage state, buffer ingredients, storage temperature and the stability of the protein itself. Generally, the shelf life of liquid form is 6 months at -20°C/-80°C. The shelf life of lyophilized form is 12 months at -20°C/-80°C.