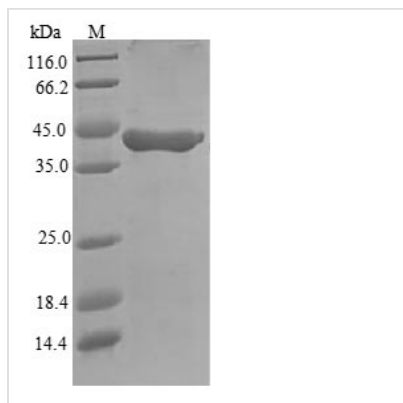




Recombinant Mouse Granzyme A (Gzma)

| | |
|--------------------------|--|
| Product Code | CSB-EP010081MO |
| Relevance | Abundant protease in the cytosolic granules of cytotoxic T-cells and NK-cells which activates caspase-independent cell death with morphological features of apoptosis when delivered into the target cell through the immunological synapse. It cleaves after Lys or Arg. Cleaves APEX1 after 'Lys-31' and destroys its oxidative repair activity. Cleaves the nucleosome assembly protein SET after 'Lys-189', which disrupts its nucleosome assembly activity and allows the SET complex to translocate into the nucleus to nick and degrade the DNA |
| Abbreviation | Recombinant Mouse Gzma protein |
| Storage | The shelf life is related to many factors, storage state, buffer ingredients, storage temperature and the stability of the protein itself. Generally, the shelf life of liquid form is 6 months at -20°C/-80°C. The shelf life of lyophilized form is 12 months at -20°C/-80°C. |
| Uniprot No. | P11032 |
| Alias | Autocrine thymic lymphoma granzyme-like serine protease CTLA-3 Fragmentin-1 T cell-specific serine protease 1 |
| Product Type | Recombinant Protein |
| Immunogen Species | Mus musculus (Mouse) |
| Purity | Greater than 90% as determined by SDS-PAGE. |
| Sequence | IIGGDTVPHSRPYMALLKLSNTICAGALIEKNWVLTAAHCNVGKRSKFILGAH SINKEPEQQILTVKKAFFPYPCYDEYTREGDLQLVRLKKKATVNRNVAILHLPKK GDDVKPGTRCRVAGWGRFGNKSAPSETLREVNITVIDRKICNDEKHYNFHPVI GLNMICAGDLRGGKDSCNGDSGSPLLCDGILRGITSGGGEKCGDRRWPGVYT FLSDKHLNWIKKIMKGSV |
| Research Area | Cell Biology |
| Source | E.coli |
| Target Names | Gzma |
| Expression Region | 29-260aa |
| Notes | Repeated freezing and thawing is not recommended. Store working aliquots at 4°C for up to one week. |
| Tag Info | N-terminal 6xHis-B2M-tagged |
| Mol. Weight | 39.6kDa |
| Protein Length | Full Length of Mature Protein |
| Image | |



(Tris-Glycine gel) Discontinuous SDS-PAGE (reduced) with 5% enrichment gel and 15% separation gel.

Reconstitution

We recommend that this vial be briefly centrifuged prior to opening to bring the contents to the bottom. Please reconstitute protein in deionized sterile water to a concentration of 0.1-1.0 mg/mL. We recommend to add 5-50% of glycerol (final concentration) and aliquot for long-term storage at -20°C/-80°C. Our default final concentration of glycerol is 50%. Customers could use it as reference.

Shelf Life

The shelf life is related to many factors, storage state, buffer ingredients, storage temperature and the stability of the protein itself. Generally, the shelf life of liquid form is 6 months at -20°C/-80°C. The shelf life of lyophilized form is 12 months at -20°C/-80°C.