



Recombinant Human Estrogen receptor beta (ESR2), partial

Product Code	CSB-YP007831HU
Relevance	Nuclear hormone receptor. Binds estrogens with an affinity similar to that of ESR1, and activates expression of reporter genes containing estrogen response elements (ERE) in an estrogen-dependent manner. Isoform beta-cx lacks ligand binding ability and has no or only very low ere binding activity resulting in the loss of ligand-dependent transactivation ability. DNA-binding by ESR1 and ESR2 is rapidly lost at 37 degrees Celsius in the absence of ligand while in the presence of 17 beta-estradiol and 4-hydroxy-tamoxifen loss in DNA-binding at elevated temperature is more gradual.
Abbreviation	Recombinant Human ESR2 protein, partial
Storage	The shelf life is related to many factors, storage state, buffer ingredients, storage temperature and the stability of the protein itself. Generally, the shelf life of liquid form is 6 months at -20°C/-80°C. The shelf life of lyophilized form is 12 months at -20°C/-80°C.
Uniprot No.	Q92731
Alias	Nuclear receptor subfamily 3 group A member 2
Product Type	Recombinant Protein
Immunogen Species	Homo sapiens (Human)
Purity	Greater than 90% as determined by SDS-PAGE.
Sequence	DIKNSPSSLNSPSSYNCSQSILPLEHGSIYIPSSYVDSHHEY PAMTFYSPAVMN YSIPSNVTNLEGGPGRQTTSPNVLWPTPGHLSPLVVHRQLSHLYAEPQKSPW CEARSLEHTLPVNRETLKRKVSGNRCASPVTGPGSKRDAHFCVCSYASGY HYGVWSCEGCKAFFKRSIQGHNDYICPATNQCTIDKNRRKSCQACRLRKCYE VGMVKCGSRRERCGYRLVRRQRSADQLHCAGKAKRSGGHAPRVRELLLDA LSPEQLVLTLLAEPPHVLISRPSAPFTEASMMMSLTKLADKELVHMISWAKKIP GFVELSLFDQVRLLESCWMEVLMMLMWRSIDHPGKLIFAPDLVDRDEGKC VEGILEIFDMLLATTSRFRELKLQKEYLCVKAMILLNSSMYPLVTATQDADSSR KLAHLLNAVTDALVWVIAKSGISSQQQSMRLANLLMLLSHVRHASNKGMEHLL NMKCKNVVPVYDLLLEMLNAHVLRGCKSSITGSECSPAEDSKSKEGSQNPQS Q
Source	Yeast
Target Names	ESR2
Protein Names	Recommended name: Estrogen receptor beta Short name= ER-beta Alternative name(s): Nuclear receptor subfamily 3 group A member 2
Expression Region	2-530aa
Notes	Repeated freezing and thawing is not recommended. Store working aliquots at 4°C for up to one week.

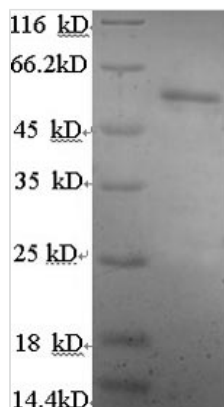


Tag Info N-terminal 6xHis-tagged

Mol. Weight 61.1kDa

Protein Length Partial

Image



(Tris-Glycine gel) Discontinuous SDS-PAGE (reduced) with 5% enrichment gel and 15% separation gel.

Reconstitution

We recommend that this vial be briefly centrifuged prior to opening to bring the contents to the bottom. Please reconstitute protein in deionized sterile water to a concentration of 0.1-1.0 mg/mL. We recommend to add 5-50% of glycerol (final concentration) and aliquot for long-term storage at -20°C/-80°C. Our default final concentration of glycerol is 50%. Customers could use it as reference.

Shelf Life

The shelf life is related to many factors, storage state, buffer ingredients, storage temperature and the stability of the protein itself. Generally, the shelf life of liquid form is 6 months at -20°C/-80°C. The shelf life of lyophilized form is 12 months at -20°C/-80°C.