

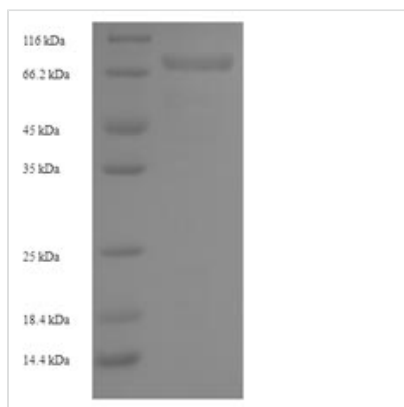


# Recombinant Human Hyaluronidase PH-20 (SPAM1)

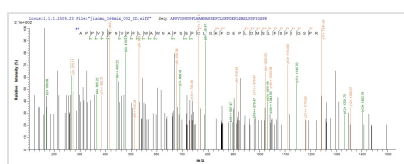
<b>Product Code</b>	CSB-EP022471HU
<b>Relevance</b>	Involved in sperm-egg adhesion. Upon fertilization sperm must first penetrate a layer of cumulus cells that surrounds the egg before reaching the zona pellucida. The cumulus cells are bedded in a matrix containing hyaluronic acid which is formed prior to ovulation. This protein aids in penetrating the layer of cumulus cells by digesting hyaluronic acid.
<b>Abbreviation</b>	Recombinant Human SPAM1 protein
<b>Storage</b>	The shelf life is related to many factors, storage state, buffer ingredients, storage temperature and the stability of the protein itself. Generally, the shelf life of liquid form is 6 months at -20°C/-80°C. The shelf life of lyophilized form is 12 months at -20°C/-80°C.
<b>Uniprot No.</b>	P38567
<b>Alias</b>	Hyaluronoglucosaminidase PH-20Sperm adhesion molecule 1Sperm surface protein PH-20
<b>Product Type</b>	Recombinant Protein
<b>Immunogen Species</b>	Homo sapiens (Human)
<b>Purity</b>	≥ 90% as determined by SDS-PAGE.
<b>Sequence</b>	LNFRAPPVIPNVPFLWAWNAPSEFCLGKFDEPLDMSLFSFIGSPRINATGQGV TIFYVDRLGYYPYIDSITGVTVNGGIPQKISLQDHLDKAKKDITFYMPVDNLGMA VIDWEEWRPTWARNWKPDKVYKNRSIELVQQQNVQLSLTEATEKAKQEFEKA GKDFLVETIKLGKLLRPNHLWGYYLFPDCYNHHYKPKPGYNGSCFNVEIKRND LSWLWNESTALYPSIYLNTQQSPVAATLYVRNRVREAIRVSKIPDAKSPLPVFA YTRIVFTDQVLKFLSQDELVYTFGETVALGASGIVIWGTLSIMRSMKSCLLLDNY METILNPYIINVTLAAKMCSQVLCQEQQVCIRKNWNSSDYHLNPDNFQAIQLEK GGKFTVRGKPTLEDLEQFSEKFCSCYSTLSCKEKADVKD TDAVDVCIADGVC IDAFKPPMETEEPQIFYNASPSTLS
<b>Research Area</b>	Cancer
<b>Source</b>	E.coli
<b>Target Names</b>	SPAM1
<b>Expression Region</b>	36-490aa
<b>Notes</b>	Repeated freezing and thawing is not recommended. Store working aliquots at 4°C for up to one week.
<b>Tag Info</b>	N-terminal 6xHis-SUMO-tagged
<b>Mol. Weight</b>	67.9kDa
<b>Protein Length</b>	Full Length of Mature Protein



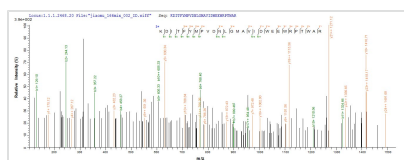
**Image**



(Tris-Glycine gel) Discontinuous SDS-PAGE (reduced) with 5% enrichment gel and 15% separation gel.



Based on the SEQUEST from database of E.coli host and target protein, the LC-MS/MS Analysis result of CSB-EP022471HU could indicate that this peptide derived from E.coli-expressed Homo sapiens (Human) SPAM1.



Based on the SEQUEST from database of E.coli host and target protein, the LC-MS/MS Analysis result of CSB-EP022471HU could indicate that this peptide derived from E.coli-expressed Homo sapiens (Human) SPAM1.

**Reconstitution**

We recommend that this vial be briefly centrifuged prior to opening to bring the contents to the bottom. Please reconstitute protein in deionized sterile water to a concentration of 0.1-1.0 mg/mL. We recommend to add 5-50% of glycerol (final concentration) and aliquot for long-term storage at -20°C/-80°C. Our default final concentration of glycerol is 50%. Customers could use it as reference.

**Shelf Life**

The shelf life is related to many factors, storage state, buffer ingredients, storage temperature and the stability of the protein itself. Generally, the shelf life of liquid form is 6 months at -20°C/-80°C. The shelf life of lyophilized form is 12 months at -20°C/-80°C.