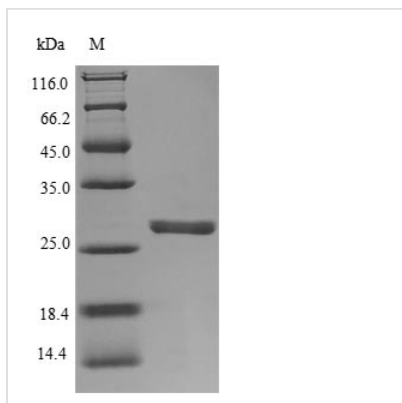




# Recombinant Human Neutrophil elastase (ELANE)

<b>Product Code</b>	CSB-YP007587HU
<b>Relevance</b>	Modifies the functions of natural killer cells, monocytes and granulocytes. Inhibits C5a-dependent neutrophil enzyme release and chotaxis.
<b>Abbreviation</b>	Recombinant Human ELANE protein
<b>Storage</b>	The shelf life is related to many factors, storage state, buffer ingredients, storage temperature and the stability of the protein itself. Generally, the shelf life of liquid form is 6 months at -20°C/-80°C. The shelf life of lyophilized form is 12 months at -20°C/-80°C.
<b>Uniprot No.</b>	P08246
<b>Alias</b>	Bone marrow serine protease;Elastase-2Human leukocyte elastase ;HLEMedullasin;PMN elastase
<b>Product Type</b>	Recombinant Protein
<b>Immunogen Species</b>	Homo sapiens (Human)
<b>Purity</b>	≥ 90% as determined by SDS-PAGE.
<b>Sequence</b>	IVGGRRARPHAWPFMVSLQLRGGHFCGATLIAPNFVMSAAHCVANVNVRAVR VVLGAHNLSRREPTRQVFAVQRIFENGYDPVNULLNDIVILQLNGSATINANVQV AQLPAQGRRLGNGVQCLAMGWLLGRNRGIASVLQELNVTVVTSLCRRSNV CTLVRGRQAGVCFGDSGSPVLCNGLIHGIASFVRGGCASGLYPDAFAPVAQF VNWIDSIIQRSEDNPCPHPRDPDPASRTH
<b>Research Area</b>	Signal Transduction
<b>Source</b>	Yeast
<b>Target Names</b>	ELANE
<b>Protein Names</b>	Recommended name: Neutrophil elastase EC= 3.4.21.37 Alternative name(s): Bone marrow serine protease Elastase-2 Human leukocyte elastase Short name= HLE Medullasin PMN elastase
<b>Expression Region</b>	30-267aa
<b>Notes</b>	Repeated freezing and thawing is not recommended. Store working aliquots at 4°C for up to one week.
<b>Tag Info</b>	N-terminal 6xHis-tagged
<b>Mol. Weight</b>	27.6kDa
<b>Protein Length</b>	Full Length of Mature Protein
<b>Image</b>	



(Tris-Glycine gel) Discontinuous SDS-PAGE (reduced) with 5% enrichment gel and 15% separation gel.

### Reconstitution

We recommend that this vial be briefly centrifuged prior to opening to bring the contents to the bottom. Please reconstitute protein in deionized sterile water to a concentration of 0.1-1.0 mg/mL. We recommend to add 5-50% of glycerol (final concentration) and aliquot for long-term storage at -20°C/-80°C. Our default final concentration of glycerol is 50%. Customers could use it as reference.

### Shelf Life

The shelf life is related to many factors, storage state, buffer ingredients, storage temperature and the stability of the protein itself. Generally, the shelf life of liquid form is 6 months at -20°C/-80°C. The shelf life of lyophilized form is 12 months at -20°C/-80°C.