

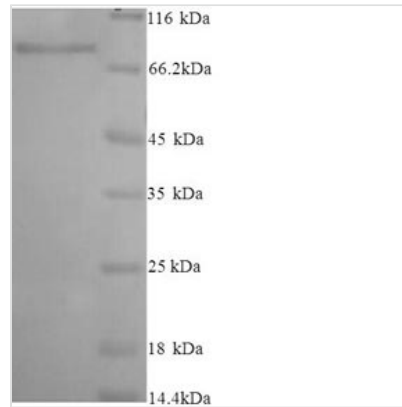


# Recombinant Human Inactive N-acetylated-alpha-linked acidic dipeptidase-like protein 2 (NAALADL2), partial

<b>Product Code</b>	CSB-YP704507HU
<b>Abbreviation</b>	Recombinant Human NAALADL2 protein, partial
<b>Storage</b>	The shelf life is related to many factors, storage state, buffer ingredients, storage temperature and the stability of the protein itself. Generally, the shelf life of liquid form is 6 months at -20°C/-80°C. The shelf life of lyophilized form is 12 months at -20°C/-80°C.
<b>Uniprot No.</b>	Q58DX5
<b>Product Type</b>	Recombinant Protein
<b>Immunogen Species</b>	Homo sapiens (Human)
<b>Purity</b>	Greater than 90% as determined by SDS-PAGE.
<b>Sequence</b>	<p>           GYYVHTNCPSDAPSSGTVDPQLYQEILKTIQAEDIKKSFRNLVQLYKNEDDMEI            SKKIKTQWTSLGLEDEVQFVNYSVLLDLPGPSPSTVTLSSSGQCFHPNGQPCSE            EARKDSSQDLLYSYAAYSAGKTLKAEVIDVSYGMADDLKRIRKIKNVTNQIALLK            LGKLPLLYKLSSLEKAGFGGVLLYIDPCDLPKTVNPSHDTFMVSLNPGGDPSTP            GYPSVDESFRQSRSNLTSLLVQPISAPLVAKLISSPKARTKNEACSSLELPNNEI            RVVSMQVQTVTKLKTVTNVVGFVMGLTSPDRYIIVGSHHHTAHSYNGQEWAS            STAITAFIRALMSKVKRGWRPDRTIVFCSWGGTAFGNIGSYEWGEDFKKVLQ            KNVVAYISLHSPIRGNSSLYPVASPSLQQLVVEKNNFNCTRRAQCPETNISSIQI            QGDADYFINHLGVPVIVQFAYEDIKTLLEGPSFLSEARFSTRATKIEEMDPSFNLHE            TITKLSGEVILQIANEPVLPFNALDIALEVQNNLKGDPNTHQLLAMALRLRESA            ELFQSDEMPPANDPKERAPIRIRMLNDILQDMEKSFLVKQAPPGFYRNILYHLD            EKTSRFSILIEAWEHCKPLASNETLQEALSEVLNSINSAQVYFKAGLDVFKSVLD            GKN         </p>
<b>Research Area</b>	Cell Biology
<b>Source</b>	Yeast
<b>Target Names</b>	NAALADL2
<b>Protein Names</b>	Recommended name: Inactive N-acetylated-alpha-linked acidic dipeptidase-like protein 2 Short name= NAALADase L2
<b>Expression Region</b>	143-795aa
<b>Notes</b>	Repeated freezing and thawing is not recommended. Store working aliquots at 4°C for up to one week.
<b>Tag Info</b>	N-terminal 6xHis-tagged
<b>Mol. Weight</b>	74.6kDa
<b>Protein Length</b>	Extracellular Domain



## Image



(Tris-Glycine gel) Discontinuous SDS-PAGE (reduced) with 5% enrichment gel and 15% separation gel.

## Reconstitution

We recommend that this vial be briefly centrifuged prior to opening to bring the contents to the bottom. Please reconstitute protein in deionized sterile water to a concentration of 0.1-1.0 mg/mL. We recommend to add 5-50% of glycerol (final concentration) and aliquot for long-term storage at -20°C/-80°C. Our default final concentration of glycerol is 50%. Customers could use it as reference.

## Shelf Life

The shelf life is related to many factors, storage state, buffer ingredients, storage temperature and the stability of the protein itself.

Generally, the shelf life of liquid form is 6 months at -20°C/-80°C. The shelf life of lyophilized form is 12 months at -20°C/-80°C.