



# Recombinant Dog Epididymal secretory protein E1 (NPC)

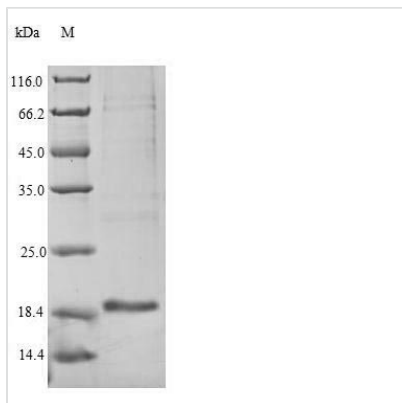
<b>Product Code</b>	CSB-YP634688DO
<b>Relevance</b>	Intracellular cholesterol transporter which acts in concert with NPC1 and plays an important role in the egress of cholesterol from the endosomal/lysosomal compartment. Both NPC1 and NPC2 function as the cellular 'tag team duo' (TTD) to catalyze the mobilization of cholesterol within the multivesicular environment of the late endosome (LE) to effect egress through the limiting bilayer of the LE. NPC2 binds unesterified cholesterol that has been released from LDLs in the lumen of the late endosomes/lysosomes and transfers it to the cholesterol-binding pocket of the N-terminal domain of NPC1. Cholesterol binds to NPC1 with the hydroxyl group buried in the binding pocket and is exported from the limiting mbrane of late endosomes/ lysosomes to the ER and plasma mbrane by an unknown mechanism. The secreted form of NCP2 regulates biliary cholesterol secretion via stimulation of ABCG5/ABCG8-mediated cholesterol transport .
<b>Abbreviation</b>	Recombinant Dog NPC protein
<b>Storage</b>	The shelf life is related to many factors, storage state, buffer ingredients, storage temperature and the stability of the protein itself. Generally, the shelf life of liquid form is 6 months at -20°C/-80°C. The shelf life of lyophilized form is 12 months at -20°C/-80°C.
<b>Uniprot No.</b>	Q28895
<b>Alias</b>	Niemann Pick type C2 protein homologcE1
<b>Product Type</b>	Recombinant Protein
<b>Immunogen Species</b>	Canis lupus familiaris (Dog) (Canis familiaris)
<b>Purity</b>	Greater than 90% as determined by SDS-PAGE.
<b>Sequence</b>	VHFKDCGSAVGVIKELNVNCPAQPCCKLHKGQSYSVNVTFSTNIPSQSSKAVV HGIVLGVAVPFPPIPEADGCKSGINCPKIQKDKTYSYLNKLPVKNEYPSIKLVVQW MLLGDNNQHLFCWEIPVQIEG
<b>Research Area</b>	Others
<b>Source</b>	Yeast
<b>Target Names</b>	NPC2
<b>Protein Names</b>	Recommended name: Epididymal secretory protein E1 Alternative name(s): Niemann Pick type C2 protein homolog cE1
<b>Expression Region</b>	22-149aa
<b>Notes</b>	Repeated freezing and thawing is not recommended. Store working aliquots at 4°C for up to one week.
<b>Tag Info</b>	N-terminal 6xHis-tagged



---

<b>Mol. Weight</b>	16.0kDa
<b>Protein Length</b>	Full Length of Mature Protein

---

**Image**

(Tris-Glycine gel) Discontinuous SDS-PAGE (reduced) with 5% enrichment gel and 15% separation gel.

---

<b>Reconstitution</b>	We recommend that this vial be briefly centrifuged prior to opening to bring the contents to the bottom. Please reconstitute protein in deionized sterile water to a concentration of 0.1-1.0 mg/mL. We recommend to add 5-50% of glycerol (final concentration) and aliquot for long-term storage at -20°C/-80°C. Our default final concentration of glycerol is 50%. Customers could use it as reference.
-----------------------	---

---

<b>Shelf Life</b>	The shelf life is related to many factors, storage state, buffer ingredients, storage temperature and the stability of the protein itself. Generally, the shelf life of liquid form is 6 months at -20°C/-80°C. The shelf life of lyophilized form is 12 months at -20°C/-80°C.
-------------------	---