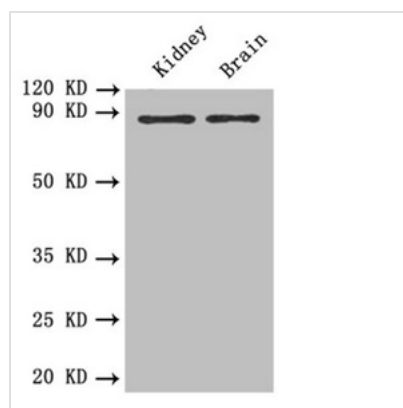




PTPRE Antibody

Product Code	CSB-PA019052ESR2HU
Storage	Upon receipt, store at -20°C or -80°C. Avoid repeated freeze.
Uniprot No.	P23469
Immunogen	Recombinant Human Receptor-type tyrosine-protein phosphatase epsilon protein (20-200AA)
Raised In	Rabbit
Species Reactivity	Human, Mouse
Tested Applications	ELISA, WB, IHC; Recommended dilution: WB:1:1000-1:5000, IHC:1:20-1:200
Form	Liquid
Conjugate	Non-conjugated
Storage Buffer	PBS with 0.02% sodium azide, 50% glycerol, pH7.3.
Purification Method	Antigen Affinity Purified
Isotype	IgG
Clonality	Polyclonal
Product Type	Polyclonal Antibody
Immunogen Species	Homo sapiens (Human)
Research Area	Signal Transduction
Target Names	PTPRE

Image



Western blot

All lanes: PTPRE antibody at 0.6 µg/ml

Lane 1: Mouse kidney tissue

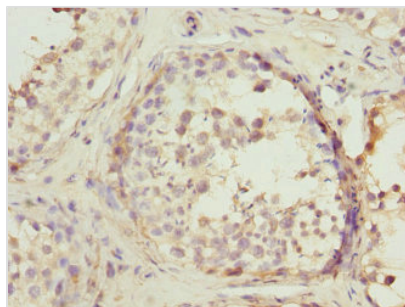
Lane 2: Mouse brain tissue

Secondary

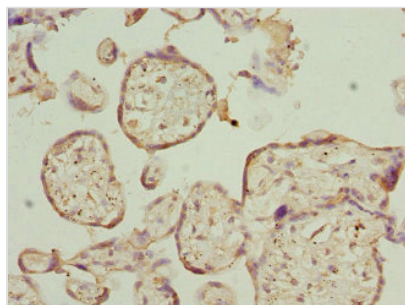
Goat polyclonal to rabbit IgG at 1/10000 dilution

Predicted band size: 81, 75, 72 kDa

Observed band size: 81 kDa



Immunohistochemistry of paraffin-embedded human testis tissue using CSB-PA019052ESR2HU at dilution of 1:100



Immunohistochemistry of paraffin-embedded human placenta tissue using CSB-PA019052ESR2HU at dilution of 1:100

Usage

For Research Use Only. Not for use in diagnostic or therapeutic procedures.