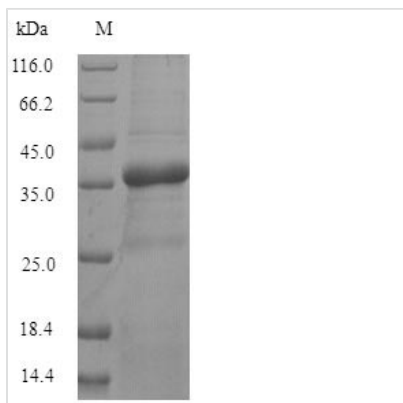




# Recombinant Human Transmembrane protein 65 (TMEM65), partial

<b>Product Code</b>	CSB-CF023869HU
<b>Relevance</b>	Plays an important role in cardiac development and function. Regulates cardiac conduction and the function of the gap junction protein GJA1. Contributes to the stability and proper localization of GJA1 to cardiac intercalated disk thereby regulating gap junction communication.
<b>Abbreviation</b>	Recombinant Human TMEM65 protein, partial
<b>Storage</b>	The shelf life is related to many factors, storage state, buffer ingredients, storage temperature and the stability of the protein itself. Generally, the shelf life of liquid form is 6 months at -20°C/-80°C. The shelf life of lyophilized form is 12 months at -20°C/-80°C.
<b>Uniprot No.</b>	Q6PI78
<b>Product Type</b>	Transmembrane Protein
<b>Immunogen Species</b>	Homo sapiens (Human)
<b>Purity</b>	≥ 90% as determined by SDS-PAGE.
<b>Sequence</b>	MEALNTAQQGARDFIYSLHSTERSCLLKELHRFESIAIAQEKLEAPPPTPGQLRY VFIHNAIPFIGFGFLDNAIMIVAGTHIEMSIGIILGISTMAAAAALGNLVSDLAGLGLA GYVEALASRLGLSIPDLTPKQVDMWQTRLSTHLGKAVGVTIGCILGMFPLIFFG GGEDEKLETKS
<b>Research Area</b>	Cell Biology
<b>Source</b>	in vitro E.coli expression system
<b>Target Names</b>	TMEM65
<b>Expression Region</b>	63-240aa
<b>Notes</b>	Repeated freezing and thawing is not recommended. Store working aliquots at 4°C for up to one week.
<b>Tag Info</b>	N-terminal 6xHis-SUMO-tagged
<b>Mol. Weight</b>	35.1kDa
<b>Protein Length</b>	Partial
<b>Image</b>	



(Tris-Glycine gel) Discontinuous SDS-PAGE (reduced) with 5% enrichment gel and 15% separation gel.

### Reconstitution

We recommend that this vial be briefly centrifuged prior to opening to bring the contents to the bottom. Please reconstitute protein in deionized sterile water to a concentration of 0.1-1.0 mg/mL. We recommend to add 5-50% of glycerol (final concentration) and aliquot for long-term storage at  $-20^{\circ}\text{C}/-80^{\circ}\text{C}$ . Our default final concentration of glycerol is 50%. Customers could use it as reference.

### Shelf Life

The shelf life is related to many factors, storage state, buffer ingredients, storage temperature and the stability of the protein itself. Generally, the shelf life of liquid form is 6 months at  $-20^{\circ}\text{C}/-80^{\circ}\text{C}$ . The shelf life of lyophilized form is 12 months at  $-20^{\circ}\text{C}/-80^{\circ}\text{C}$ .