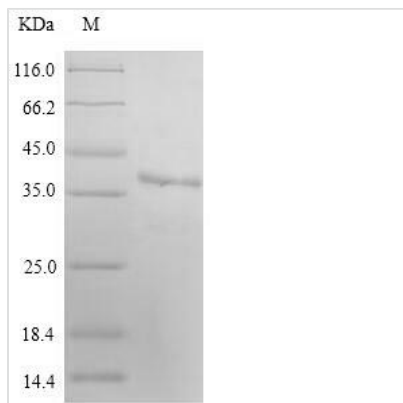




Recombinant Human E3 ubiquitin-protein ligase MARCH2 (MARCH2)

Product Code	CSB-CF878948HU
Relevance	E3 ubiquitin-protein ligase that may mediate ubiquitination of TFRC and CD86, and promote their subsequent endocytosis and sorting to lysosomes via multivesicular bodies. E3 ubiquitin ligases accept ubiquitin from an E2 ubiquitin-conjugating enzyme in the form of a thioester and then directly transfer the ubiquitin to targeted substrates. May be involved in endosomal trafficking through interaction with STX6.
Abbreviation	Recombinant Human MARCH2 protein
Storage	The shelf life is related to many factors, storage state, buffer ingredients, storage temperature and the stability of the protein itself. Generally, the shelf life of liquid form is 6 months at -20°C/-80°C. The shelf life of lyophilized form is 12 months at -20°C/-80°C.
Uniprot No.	Q9P0N8
Product Type	Transmembrane Protein
Immunogen Species	Homo sapiens (Human)
Purity	≥ 90% as determined by SDS-PAGE.
Sequence	MTTGDCCHLPGSLCDCSGSPAFSKVVEATGLGPPQYVAQVTSRDGROLLSTVI RALDTPSDGPFRCRICHEGANGECLLSPCGCTGTLGAVHKSCLEKWLSSSNTS YCELCHTEFAVEKRPRPLTEWLKDPGPRTEKRTLCCDMVCFLFITPLAAISGW LCLRGAQDHLRLHSQLEAVGLIALTIALFTIYVLWTLVSFRYHCQLYSEWRKTN QKVRLKIREADSPEGPQHSPLAAGLLKKVAEETPV
Research Area	CellBiology
Source	in vitro E.coli expression system
Target Names	MARCH2
Protein Names	Membrane-associated RING finger protein 2 Membrane-associated RING-CH protein II
Expression Region	1-246aa
Notes	Repeated freezing and thawing is not recommended. Store working aliquots at 4°C for up to one week.
Tag Info	N-terminal 6xHis-SUMO-tagged
Mol. Weight	43.0kDa
Protein Length	Full Length
Image	



(Tris-Glycine gel) Discontinuous SDS-PAGE (reduced) with 5% enrichment gel and 15% separation gel.

Reconstitution

We recommend that this vial be briefly centrifuged prior to opening to bring the contents to the bottom. Please reconstitute protein in deionized sterile water to a concentration of 0.1-1.0 mg/mL. We recommend to add 5-50% of glycerol (final concentration) and aliquot for long-term storage at -20°C/-80°C. Our default final concentration of glycerol is 50%. Customers could use it as reference.

Shelf Life

The shelf life is related to many factors, storage state, buffer ingredients, storage temperature and the stability of the protein itself. Generally, the shelf life of liquid form is 6 months at -20°C/-80°C. The shelf life of lyophilized form is 12 months at -20°C/-80°C.