

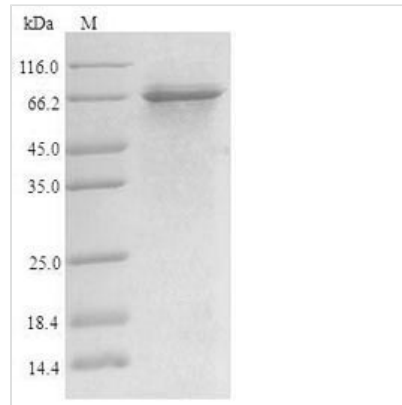


# Recombinant Human Sterol regulatory element-binding protein 1 (SREBF1), partial

<b>Product Code</b>	CSB-CF022657HU
<b>Relevance</b>	Transcriptional activator required for lipid homeostasis. Regulates transcription of the LDL receptor gene as well as the fatty acid and to a lesser degree the cholesterol synthesis pathway (By similarity). Binds to the sterol regulatory element 1 (SRE-1) (5'-ATCACCCCAC-3'). Has dual sequence specificity binding to both an E-box motif (5'-ATCACGTGA-3') and to SRE-1 (5'-ATCACCCCAC-3')
<b>Storage</b>	The shelf life is related to many factors, storage state, buffer ingredients, storage temperature and the stability of the protein itself. Generally, the shelf life of liquid form is 6 months at -20°C/-80°C. The shelf life of lyophilized form is 12 months at -20°C/-80°C.
<b>Uniprot No.</b>	P36956
<b>Product Type</b>	Transmembrane Protein
<b>Immunogen Species</b>	Homo sapiens (Human)
<b>Purity</b>	Greater than 90% as determined by SDS-PAGE.
<b>Sequence</b>	MDEPPFSEAALEQALGEPCLDAALLTDIEDMLQLINNQDSDFFPGLFDPPYAG SGAGGTDASPDTSSPGSLPPPATLSSSLEAFLSGPQAAPSPLSPPQPAPT LKMYPSPMPAFSPGPGIKEESVPLSILQTPTPQPLPGALLPQSFPAPAPPQFSST PVLGYPSPPGGFSTGSPPGNTQQPLPGLPLASPPGVPPVSLHTQVQSVVPQQ LLTVTAAPTAAPVTTTTVTSQIQQVPVLLQPHFIKADSLLLTAMKTDGATVKAAGL SPLVSGTTVQTGPLPTLVSGGTILATVPLVVDKELPINRLAAGSKAPASAQSR GEKRTAHNAIEKRYRSSINDKIIELKDLVVGTEAKLNKSAVLRKAIDYIRFLQHSN QKLKQENLSLRTAVHKSLSLKDLSACGSGGNTDVLMEGVKTEVEDTLTPPPS DAGSPFQSSPLSLGSRGSGSGSGSDSEPDSPVFEDSKAKPEQRPSLHSRG MLDRSRLAL
<b>Research Area</b>	Cardiovascular
<b>Source</b>	in vitro E.coli expression system
<b>Target Names</b>	SREBF1
<b>Protein Names</b>	Class D basic helix-loop-helix protein 1 Short name:bHLHd1 Sterol regulatory element-binding transcription factor 1 Cleaved into the following chain: Processed sterol regulatory element-binding protein 1
<b>Expression Region</b>	1-490aa
<b>Notes</b>	Repeated freezing and thawing is not recommended. Store working aliquots at 4°C for up to one week.
<b>Tag Info</b>	N-terminal 6xHis-tagged
<b>Mol. Weight</b>	54.5kDa
<b>Protein Length</b>	Partial



## Image



(Tris-Glycine gel) Discontinuous SDS-PAGE (reduced) with 5% enrichment gel and 15% separation gel.

## Reconstitution

We recommend that this vial be briefly centrifuged prior to opening to bring the contents to the bottom. Please reconstitute protein in deionized sterile water to a concentration of 0.1-1.0 mg/mL. We recommend to add 5-50% of glycerol (final concentration) and aliquot for long-term storage at -20°C/-80°C. Our default final concentration of glycerol is 50%. Customers could use it as reference.

## Shelf Life

The shelf life is related to many factors, storage state, buffer ingredients, storage temperature and the stability of the protein itself.

Generally, the shelf life of liquid form is 6 months at -20°C/-80°C. The shelf life of lyophilized form is 12 months at -20°C/-80°C.