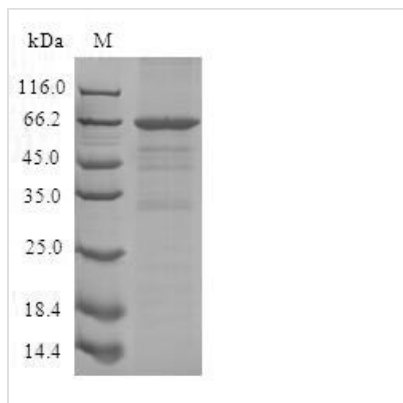


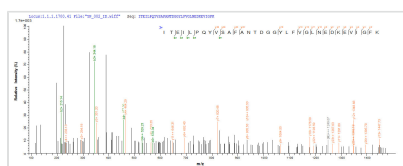


Recombinant Human Schlafen family member 12-like (SLFN12L)

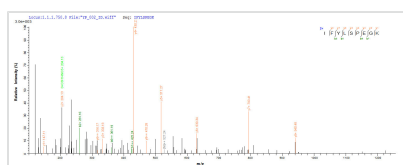
Product Code	CSB-CF021762HU
Abbreviation	Recombinant Human SLFN12L protein
Storage	The shelf life is related to many factors, storage state, buffer ingredients, storage temperature and the stability of the protein itself. Generally, the shelf life of liquid form is 6 months at -20°C/-80°C. The shelf life of lyophilized form is 12 months at -20°C/-80°C.
Uniprot No.	Q6IEE8
Product Type	Transmembrane Protein
Immunogen Species	Homo sapiens (Human)
Purity	Greater than 85% as determined by SDS-PAGE.
Sequence	MDLARKEFLRGNGLAAGKMNISIDLDTNYAELVLNVGRVTLGENNRKMKDC QLRKQQNENVSRAVCALLNSGGGVIAEVENKGYSYKKDGIGLDLENSFSNM LPFVPNFLDFMQNGNYFHIFVKSWSLETSGPQIATLSSSLYKRDVTSKVMNA SAALEFLKDMEKTGGRAYLRPEFPAKRACVDVQEESENMEALAADFFNRTELG YKEKLTFTTESTHVEIKNFSTEKLLQRITEILPQYVSAFANTDGGYLFVGLNEDKE VIGFKAEKSYLTKLEEVTKNSIGKLPVHHFCVEKGTINYLCKFLGVYDKGRLCG YVYALRVERFCCAVFAKKPDSWHVKDNRVKQLTEKEWIQFMVDSEPVCEELP SPASTSSPVSQSYPLREYINFKIQPLRYHLPGLSEKITCAPKTFCRNLFSQHEGL KQLICEEMGSVNKGSLIFSRWSLDLGLQENHKVLC DALLISQDKPPVLYTFHM VQDEEFKDYSTQTAQTLKQKLA KIGGYTKKVCVMTKIFYLSPEGKTS CQYDLN SQVIYPESYYWTTAQT MKDLEKALSNI L PKENQIFL FVCLFR FCLFVCWFVCF LR
Research Area	others
Source	in vitro E.coli expression system
Target Names	SLFN12L
Expression Region	1-588aa
Notes	Repeated freezing and thawing is not recommended. Store working aliquots at 4°C for up to one week.
Tag Info	N-terminal 10xHis-tagged and C-terminal Myc-tagged
Mol. Weight	72.1kDa
Protein Length	Full Length
Image	



(Tris-Glycine gel) Discontinuous SDS-PAGE (reduced) with 5% enrichment gel and 15% separation gel.



Based on the SEQUEST from database of E.coli host and target protein, the LC-MS/MS Analysis result of CSB-CF021762HU could indicate that this peptide derived from E.coli-expressed Homo sapiens (Human) SLFN12L.



Based on the SEQUEST from database of E.coli host and target protein, the LC-MS/MS Analysis result of CSB-CF021762HU could indicate that this peptide derived from E.coli-expressed Homo sapiens (Human) SLFN12L.

Reconstitution

We recommend that this vial be briefly centrifuged prior to opening to bring the contents to the bottom. Please reconstitute protein in deionized sterile water to a concentration of 0.1-1.0 mg/mL. We recommend to add 5-50% of glycerol (final concentration) and aliquot for long-term storage at -20°C/-80°C. Our default final concentration of glycerol is 50%. Customers could use it as reference.

Shelf Life

The shelf life is related to many factors, storage state, buffer ingredients, storage temperature and the stability of the protein itself. Generally, the shelf life of liquid form is 6 months at -20°C/-80°C. The shelf life of lyophilized form is 12 months at -20°C/-80°C.