

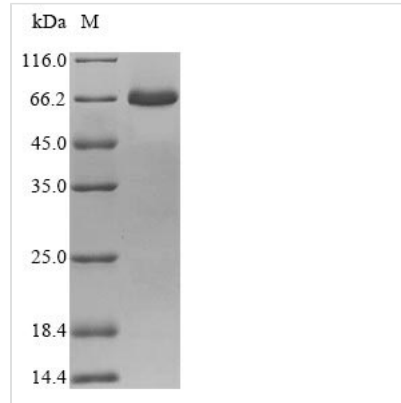


Recombinant Sindbis virus Structural polyprotein, partial

Product Code	CSB-CF361018SHZ
Relevance	Capsid protein possesses a protease activity that results in its autocatalytic cleavage from the nascent structural protein. Following its self-cleavage, the capsid protein transiently associates with ribosomes, and within several minutes the protein binds to viral RNA and rapidly assembles into icosahedric core particles. The resulting nucleocapsid eventually associates with the cytoplasmic domain of E2 at the cell membrane, leading to budding and formation of mature virions. New virions attach to target cells, and after clathrin-mediated endocytosis their membrane fuses with the host endosomal membrane. This leads to the release of the nucleocapsid into the cytoplasm, followed by an uncoating event necessary for the genomic RNA to become accessible. The uncoating might be triggered by the interaction of capsid proteins with ribosomes. Binding of ribosomes would release the genomic RNA since the same region is genomic RNA-binding and ribosome-binding
Abbreviation	Recombinant Sindbis virus Structural polyprotein, partial
Storage	The shelf life is related to many factors, storage state, buffer ingredients, storage temperature and the stability of the protein itself. Generally, the shelf life of liquid form is 6 months at -20°C/-80°C. The shelf life of lyophilized form is 12 months at -20°C/-80°C.
Uniprot No.	P03316
Product Type	Transmembrane Protein
Immunogen Species	Sindbis virus (SINV)
Purity	≥ 85% as determined by SDS-PAGE.
Sequence	YEHATTVPNVPQIPYKALVERAGYAPLNLEITVMSSEVLPSTNQEYITCKFTTVV PSPKIKCCGSLECCQPAAHADYTCKVFGGVYPFMWGGACFCDSSENSQMSEA YVELSADCASDHAQAIKVHTAAMKVGLRIVYGNTTSFLDVYVNGVTPGTSKDL KVIAGPISASFTPFDHKVVIHRGLVYNYDFPEYGAMKPGAFGDIQATSLTSKDLI ASTDIRLLKPSAKNVHVPYTQASSGFEMWKNNNGRPLQETAPFGCKIAVNPLR AVDCSYGNIPISIDIPNAAFIRTSAPLVSTVKCEVSECTYSADFGGMATLQYVS DREGQCPVHSHSSTATLQESTVHVLEKGAVTVHFSTASPQANFIVSLCGKKT CNAECKPPADHIVSTPHKNDQEFQAAISKTSWSWLFALFGGASSLLIIGLMIFA CSMMLTSTRR
Research Area	Others
Source	in vitro E.coli expression system
Protein Names	p130
Expression Region	807-1245aa
Notes	Repeated freezing and thawing is not recommended. Store working aliquots at 4°C for up to one week.



Tag Info	N-terminal 10xHis-SUMO-tagged and C-terminal Myc-tagged
Mol. Weight	67.4 kDa
Protein Length	Partial

Image

(Tris-Glycine gel) Discontinuous SDS-PAGE (reduced) with 5% enrichment gel and 15% separation gel.

Reconstitution

We recommend that this vial be briefly centrifuged prior to opening to bring the contents to the bottom. Please reconstitute protein in deionized sterile water to a concentration of 0.1-1.0 mg/mL. We recommend to add 5-50% of glycerol (final concentration) and aliquot for long-term storage at -20°C/-80°C. Our default final concentration of glycerol is 50%. Customers could use it as reference.

Shelf Life

The shelf life is related to many factors, storage state, buffer ingredients, storage temperature and the stability of the protein itself.

Generally, the shelf life of liquid form is 6 months at -20°C/-80°C. The shelf life of lyophilized form is 12 months at -20°C/-80°C.