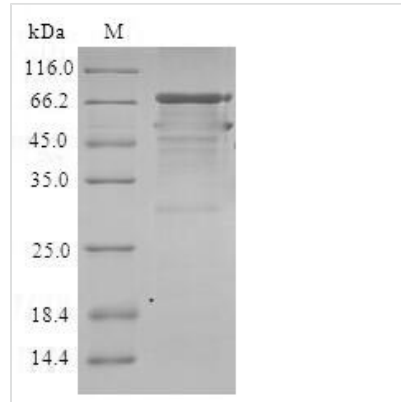




Recombinant Human Metalloreductase STEAP2 (STEAP2)

Product Code	CSB-CF854119HU
Relevance	Metalloreductase that has the ability to reduce both Fe ³⁺ to Fe ²⁺ and Cu ²⁺ to Cu ¹⁺ . Uses NAD ⁺ as acceptor
Abbreviation	Recombinant Human STEAP2 protein
Storage	The shelf life is related to many factors, storage state, buffer ingredients, storage temperature and the stability of the protein itself. Generally, the shelf life of liquid form is 6 months at -20°C/-80°C. The shelf life of lyophilized form is 12 months at -20°C/-80°C.
Uniprot No.	Q8NFT2
Product Type	Transmembrane Protein
Immunogen Species	Homo sapiens (Human)
Purity	≥ 90% as determined by SDS-PAGE.
Sequence	MESISMMGSPKSLSETFLPNGINGIKDARKVTVGVIGSGDFAKSLTIRLIRCGYH VVIGSRNPKFASEFFPHVVDVTHHEDALTKTNIIFVAIHREHYTSLWDLRHLLVG KILIDVSNMRINQYPESNAEYLASLFPDSLIVKGFNVVSAWALQLGPKDASRQ VYICSNNIARQQVIELARQLNFIPIDLGSLSSAREIENLPLRLFTLWRGPVVVAI SLATFFFLYSFVRDVIHPYARNQQSDFYKIPIEIVNKTLPIVAITLLSLVYLAGLLA AAYQLYYGTKYRRFPPWLETWLQCRKQLGLLSFFFAMVHVAYSCLCLPMRRE RYLFLNMAYQQVHANIENSWNEEEVWRIEMYISFGIMSLGLLSLLAVTSIPSVS NALNWREFSFIQSTLGYVALLISTFHVLIYGWKRAFEEYRFPYTPPNFVLALVL PSIVILGKIILFLPCISRKLKRIKKGWEKSQFLEEGMGGTIPHVSPERVTVM
Research Area	Cancer
Source	in vitro E.coli expression system
Target Names	STEAP2
Protein Names	Prostate cancer-associated protein 1 Protein up-regulated in metastatic prostate cancer
Expression Region	1-490aa
Notes	Repeated freezing and thawing is not recommended. Store working aliquots at 4°C for up to one week.
Tag Info	N-terminal 10xHis-SUMO-tagged
Mol. Weight	74.6kDa
Protein Length	Full Length
Image	



(Tris-Glycine gel) Discontinuous SDS-PAGE (reduced) with 5% enrichment gel and 15% separation gel.

Reconstitution

We recommend that this vial be briefly centrifuged prior to opening to bring the contents to the bottom. Please reconstitute protein in deionized sterile water to a concentration of 0.1-1.0 mg/mL. We recommend to add 5-50% of glycerol (final concentration) and aliquot for long-term storage at -20°C/-80°C. Our default final concentration of glycerol is 50%. Customers could use it as reference.

Shelf Life

The shelf life is related to many factors, storage state, buffer ingredients, storage temperature and the stability of the protein itself. Generally, the shelf life of liquid form is 6 months at -20°C/-80°C. The shelf life of lyophilized form is 12 months at -20°C/-80°C.