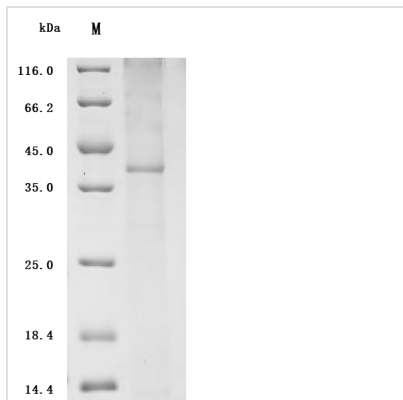


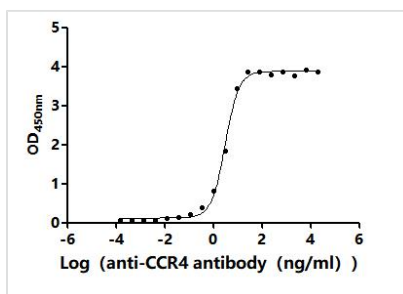


# Recombinant Human C-C chemokine receptor type 4 (CCR4) (Active)

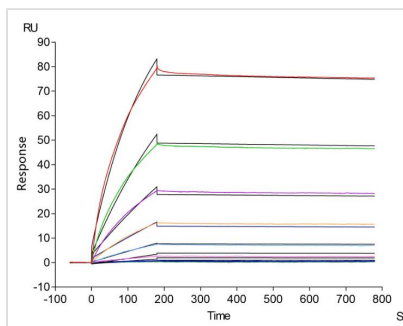
<b>Product Code</b>	CSB-CF004843HU
<b>Abbreviation</b>	Recombinant Human CCR4 protein (Active)
<b>Storage</b>	The shelf life is related to many factors, storage state, buffer ingredients, storage temperature and the stability of the protein itself. Generally, the shelf life of liquid form is 6 months at -20°C/-80°C. The shelf life of lyophilized form is 12 months at -20°C/-80°C.
<b>Uniprot No.</b>	P51679
<b>Form</b>	Lyophilized powder
<b>Storage Buffer</b>	Lyophilized from PBS, 0.05% FOS-12, 6% Trehalose, pH 8.0
<b>Product Type</b>	Recombinant Protein
<b>Immunogen Species</b>	Homo sapiens (Human)
<b>Biological Activity</b>	<p>① Measured by its binding ability in a functional ELISA. Immobilized Human CCR4 at 5 µg/mL can bind Anti-CCR4 recombinant antibody (CSB-RA004843MA01HU). The EC50 is 2.803-3.369 ng/mL.</p> <p>② Human CCR4 Full Length Protein captured on CM5 chip can bind Human CCR4 Monoclonal Antibody (CSB-RA004843MA01HU) with an affinity constant of 3.16 nM as detected by SPR Assay(Biacore T200).</p> <p>③ Human CCR4 Monoclonal Antibody (CSB-RA004843MA01HU) captured on Protein A Chip can bind Human CCR4 Full Length Protein with an affinity constant of 1.71 nM as detected by MetaSPR Assay (in presence of FOS-12)(WeSPRTM200) .</p>
<b>Purity</b>	Greater than 85% as determined by SDS-PAGE.
<b>Sequence</b>	<p>MNPTDIADTTLDESIYSNYLYESIPKPCTKEGIKAFGELFLPPLYSLVFVFGLLG  NSVVVLVLFKYKRLRSMTDVYLLNLAISDLLFVFSLPFWGYAADQWVFGGLG  CKMISWMYLVGFYSGIFFVMLMSIDRYLAIVHAVFSLRARTLTYGVITSLATWSV  AVFASLPGFLFSTCYTERNHTYCKTKYSLNSTTWKVLSSLEINILGLVIPLGIMLF  CYSMIIRTLQHCKNEKKNKAVKMIFAVVVLFLGFWTPYNIVLFLETLEVEVLQD  CTFERYLDYAIQATETLAFVHCCLNPIIYFFLGEKFRKYILQLFKTCRGLFVLCQY  CGLLQIYSADTPSSSYTQSTMDHDLHDAL</p>
<b>Source</b>	in vitro E.coli expression system
<b>Target Names</b>	CCR4
<b>Expression Region</b>	1-360aa
<b>Notes</b>	Repeated freezing and thawing is not recommended. Store working aliquots at 4°C for up to one week.
<b>Tag Info</b>	N-terminal 10xHis-tagged
<b>Mol. Weight</b>	44.2 kDa


**Protein Length**
**Full Length**
**Image**


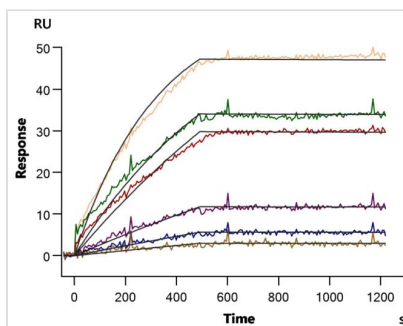
(Tris-Glycine gel) Discontinuous SDS-PAGE (reduced) with 5% enrichment gel and 15% separation gel.



**Activity**  
Measured by its binding ability in a functional ELISA. Immobilized Human CCR4 at 5 µg/ml can bind Anti-CCR4 recombinant antibody (CSB-RA004843MA01HU). The EC<sub>50</sub> is 2.803-3.369 ng/mL.



**Activity**  
Human CCR4 Full Length Protein captured on CM5 chip can bind Human CCR4 Monoclonal Antibody (CSB-RA004843MA01HU) with an affinity constant of 3.16 nM as detected by SPR Assay (Biacore T200).



**Activity**  
Human CCR4 Monoclonal Antibody (CSB-RA004843MA01HU) captured on Protein A Chip can bind Human CCR4 Full Length Protein with an affinity constant of 1.71 nM as detected by MetaSPR Assay (in presence of FOS-12)(WeSPR™ 200).

**Endotoxin**

/

**Reconstitution**

We recommend that this vial be briefly centrifuged prior to opening to bring the contents to the bottom. Please reconstitute protein in deionized sterile water to a concentration of 0.1-1.0 mg/mL. We recommend to add 5-50% of glycerol (final concentration) and aliquot for long-term storage at -20°C/-80°C. Our default final concentration of glycerol is 50%. Customers could use it as reference.



## Shelf Life

The shelf life is related to many factors, storage state, buffer ingredients, storage temperature and the stability of the protein itself.

Generally, the shelf life of liquid form is 6 months at -20°C/-80°C. The shelf life of lyophilized form is 12 months at -20°C/-80°C.