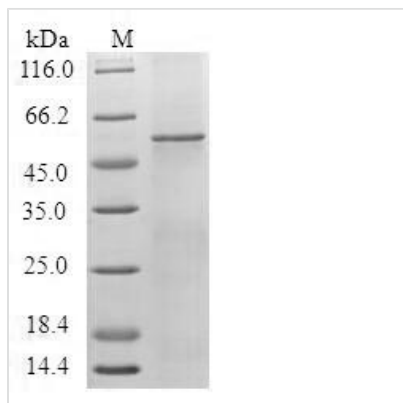




Recombinant Human 5-hydroxytryptamine receptor 1F (HTR1F)

Product Code	CSB-CF010886HU
Relevance	G-protein coupled receptor for 5-hydroxytryptamine (serotonin). Also functions as a receptor for various alkaloids and psychoactive substances. Ligand binding causes a conformation change that triggers signaling via guanine nucleotide-binding proteins (G proteins) and modulates the activity of down-stream effectors, such as adenylate cyclase. Signaling inhibits adenylate cyclase activity.
Abbreviation	Recombinant Human HTR1F protein
Storage	The shelf life is related to many factors, storage state, buffer ingredients, storage temperature and the stability of the protein itself. Generally, the shelf life of liquid form is 6 months at -20°C/-80°C. The shelf life of lyophilized form is 12 months at -20°C/-80°C.
Uniprot No.	P30939
Product Type	Transmembrane Protein
Immunogen Species	Homo sapiens (Human)
Purity	≥ 85% as determined by SDS-PAGE.
Sequence	MDFLNSSDQNLTSSELLNRMPKILVSLTSLGLALMTTINSLVIAAIIIVTRKLHH PANYLICSLAVTDFLVAVLVMPFSIVYIVRESWIMGQVVCDIWLSVDITCCTCSIL HLSAIALDRYRAITDAVEYARKRTPKHAGIMITIVWISVFISMPLFWRHQGTSR DDECIKHDHIVSTIYSTFGAFYIPLALILILYKYIYRAAKTLYHKRQASRIAKEEVN GQVLLESGEKSTKSVSTSYVLEKSLSDPSTDFDKIHSTVRSRSEFKHEKSWR RQKISGTRERKAATTLGLILGAFVICWLPFFVKELVVNVCDKCKISEEMSNFLA WLGYLNSLINPLIYTIFNEDFKKAFQKLVRRCR
Research Area	Metabolism
Source	in vitro E.coli expression system
Target Names	HTR1F
Protein Names	Serotonin receptor 1F
Expression Region	1-366aa
Notes	Repeated freezing and thawing is not recommended. Store working aliquots at 4°C for up to one week.
Tag Info	N-terminal 10xHis-SUMO-tagged
Mol. Weight	60.2 kDa
Protein Length	Full Length
Image	



(Tris-Glycine gel) Discontinuous SDS-PAGE (reduced) with 5% enrichment gel and 15% separation gel.

Reconstitution

We recommend that this vial be briefly centrifuged prior to opening to bring the contents to the bottom. Please reconstitute protein in deionized sterile water to a concentration of 0.1-1.0 mg/mL. We recommend to add 5-50% of glycerol (final concentration) and aliquot for long-term storage at -20°C/-80°C. Our default final concentration of glycerol is 50%. Customers could use it as reference.

Shelf Life

The shelf life is related to many factors, storage state, buffer ingredients, storage temperature and the stability of the protein itself. Generally, the shelf life of liquid form is 6 months at -20°C/-80°C. The shelf life of lyophilized form is 12 months at -20°C/-80°C.