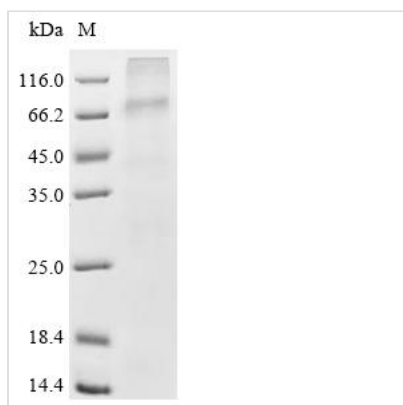




Recombinant Human Muscarinic acetylcholine receptor M5 (CHRM5)

Product Code	CSB-CF005385HU
Abbreviation	Recombinant Human CHRM5 protein
Storage	The shelf life is related to many factors, storage state, buffer ingredients, storage temperature and the stability of the protein itself. Generally, the shelf life of liquid form is 6 months at -20°C/-80°C. The shelf life of lyophilized form is 12 months at -20°C/-80°C.
Uniprot No.	P08912
Form	Liquid or Lyophilized powder
Storage Buffer	If the delivery form is liquid, the default storage buffer is Tris/PBS-based buffer, 5%-50% glycerol. If the delivery form is lyophilized powder, the buffer before lyophilization is Tris/PBS-based buffer, 6% Trehalose.
Product Type	Recombinant Human Muscarinic acetylcholine receptor M5 (CHRM5)
Immunogen Species	Homo sapiens (Human)
Sensitivity	Not Test
Purity	Greater than 95% as determined by SDS-PAGE.
Sequence	MEGDSYHNATTVNGTPVNHQPLERHRLWEVITIAAVTAVVSLITIVGNVLMISF KVNSQLKTVNNYYLLSLACADLIIGIFSMNLYTTYILMGRWALGSLACDLWLALD YVASNASVMNLLVISFDYFYSITRPLTYRAK RTPKRAGIMIGLAWLISFILWAPAI LCWQYLVGKRTVPLDECQIQFLSEPTITFGTAIAAFYIPVSVMTILYCRIYRETEK RTKDLADLQGSDSVTKAEKRKPAHRALFRSCLRCPRPTLAQRERNQASWSSS RRSTSTTGKPSQATGPSANWAKAEQLTTCSSYPSEDEDKPADPVLQVVYK SQGKESPGEEFSAEETEETFVKAETEKSDYDTPNYLLSPAAAHRPKSQKCVAY KFRLVVKADGNQETNNGCHKVKIMPCFPVAKEPSTKGLNPNPSHQMTKRKR VVLVKERKAAQTL SAILLAFIITWTPY NIMVLVSTFCDKCVPVTLWHLGYWLCYV NSTVNPICYALCNRTFRKTFKMLLLCRWKKKKVVEEKLYWQGNSKLP
Research Area	Neuroscience
Source	in vitro E.coli expression system
Target Names	CHRM5
Expression Region	1-532aa
Notes	Repeated freezing and thawing is not recommended. Store working aliquots at 4°C for up to one week.
Tag Info	N-terminal 10xHis-tagged
Mol. Weight	66.09999999999999
Protein Length	Full Length
Image	



(Tris-Glycine gel) Discontinuous SDS-PAGE (reduced) with 5% enrichment gel and 15% separation gel.

Reconstitution

We recommend that this vial be briefly centrifuged prior to opening to bring the contents to the bottom. Please reconstitute protein in deionized sterile water to a concentration of 0.1-1.0 mg/mL. We recommend to add 5-50% of glycerol (final concentration) and aliquot for long-term storage at -20°C/-80°C. Our default final concentration of glycerol is 50%. Customers could use it as reference.

Shelf Life

The shelf life is related to many factors, storage state, buffer ingredients, storage temperature and the stability of the protein itself. Generally, the shelf life of liquid form is 6 months at -20°C/-80°C. The shelf life of lyophilized form is 12 months at -20°C/-80°C.