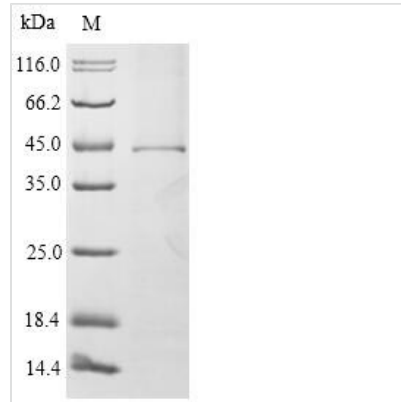




# Recombinant Mouse High affinity immunoglobulin epsilon receptor subunit alpha (Fcer1a)

<b>Product Code</b>	CSB-CF008532MO
<b>Relevance</b>	Binds to the Fc region of immunoglobulins epsilon. High affinity receptor. Responsible for initiating the allergic response. Binding of allergen to receptor-bound IgE leads to cell activation and the release of mediators (such as histamine) responsible for the manifestations of allergy. The same receptor also induces the secretion of important lymphokines.
<b>Abbreviation</b>	Recombinant Mouse Fcer1a protein
<b>Storage</b>	The shelf life is related to many factors, storage state, buffer ingredients, storage temperature and the stability of the protein itself. Generally, the shelf life of liquid form is 6 months at -20°C/-80°C. The shelf life of lyophilized form is 12 months at -20°C/-80°C.
<b>Uniprot No.</b>	P20489
<b>Product Type</b>	Transmembrane Protein
<b>Immunogen Species</b>	Mus musculus (Mouse)
<b>Purity</b>	Greater than 90% as determined by SDS-PAGE.
<b>Sequence</b>	ATEKSVLTLDPPWIRIFTGEKVTLS CYGNNHLQMNSTTKWIHNGTVSEVNSSH LVIVSATVQDSGKYICQKQGLFKSKPVYLNVTQDWLLLQTSADMVLVHGSFDIR CHGWKNWNVKVIYYRNDHAFNYSYESPVSIREATLNDSGTYHCKGYLRQVK YESDKFRIAVVKAYKCKYYWLQLIFPLL VAILFAVDTGLLLSTEEQFKSVLEIQKT GKYKKVETELLT
<b>Research Area</b>	Immunology
<b>Source</b>	in vitro E.coli expression system
<b>Target Names</b>	Fcer1a
<b>Protein Names</b>	Fc-epsilon RI-alpha
<b>Expression Region</b>	24-250aa
<b>Notes</b>	Repeated freezing and thawing is not recommended. Store working aliquots at 4°C for up to one week.
<b>Tag Info</b>	N-terminal 10xHis-SUMO-tagged
<b>Mol. Weight</b>	44.7kDa
<b>Protein Length</b>	Full Length of Mature Protein
<b>Image</b>	



(Tris-Glycine gel) Discontinuous SDS-PAGE (reduced) with 5% enrichment gel and 15% separation gel.

### Reconstitution

We recommend that this vial be briefly centrifuged prior to opening to bring the contents to the bottom. Please reconstitute protein in deionized sterile water to a concentration of 0.1-1.0 mg/mL. We recommend to add 5-50% of glycerol (final concentration) and aliquot for long-term storage at -20°C/-80°C. Our default final concentration of glycerol is 50%. Customers could use it as reference.

### Shelf Life

The shelf life is related to many factors, storage state, buffer ingredients, storage temperature and the stability of the protein itself. Generally, the shelf life of liquid form is 6 months at -20°C/-80°C. The shelf life of lyophilized form is 12 months at -20°C/-80°C.