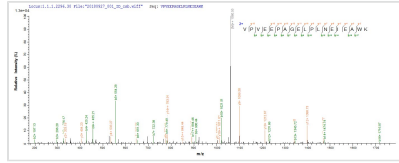


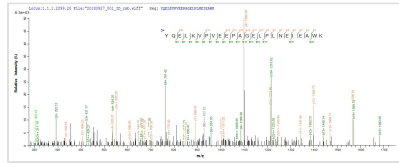


Recombinant Mouse 5'-3' exonuclease PLD3 (Pld3)

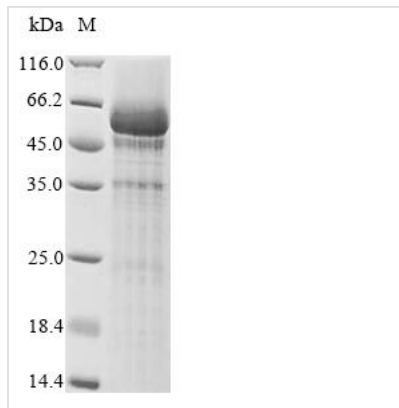
Product Code	CSB-CF018146MO
Abbreviation	Recombinant Mouse Pld3 protein
Storage	The shelf life is related to many factors, storage state, buffer ingredients, storage temperature and the stability of the protein itself. Generally, the shelf life of liquid form is 6 months at -20°C/-80°C. The shelf life of lyophilized form is 12 months at -20°C/-80°C.
Uniprot No.	O35405
Storage Buffer	Lyophilized from Tris/PBS-based buffer, 6% Trehalose
Product Type	Transmembrane Proteins
Immunogen Species	Mus musculus (Mouse)
Purity	Greater than 85% as determined by SDS-PAGE.
Sequence	MKPCLMYQELKVPVEEPAGELPLNEIEAWKAAEKKARWVLLVLILAVVGFAL MTQLFLWEYGDLHLFGPNQRPAPCYDPCEAVLVESIPEGLEFPNATTSNPSTS QAWLGLLAGAHSSLDIASFYWTLTNNDTHTQEPSAQQGEEVLQQLQALAPRG VKVRIAVSKPNGPLADLQSLQSGAQVRMVD MQKLTHGVLHTKFWVVDQTHF YLGSANMDWRSLTQVKELGVVMYNCCLARDLTKIFEAYWFLGQAGSSIPST WPRSFDTRYNQETPMEICLNGTPALAYLASAPPPLCPSGRTPDLKALLNVVDS ARFSIYIAVMNYLPTMEFSHPRRFWPAIDDGLRRAAYERGVKVRLLISCWGHS DPSMRSFLLSLAALHDNHTHSDIQVKLFVPTDESQARIPYARVNHNKYMVTE RASYIGTSNWSGSYFTETAGTSLLV TQNGHGGLRSQLEAVFLRDWESPYSHD LDTSANSVGNACRL
Research Area	Others
Source	in vitro E.coli expression system
Target Names	Pld3
Protein Names	Recommended name: Phospholipase D3 Short name= PLD 3 EC= 3.1.4.4 Alternative name(s): Choline phosphatase 3 Phosphatidylcholine-hydrolyzing phospholipase D3 Schwannoma-associated protein 9 Short name= SAM-9
Expression Region	1-488aa
Notes	Repeated freezing and thawing is not recommended. Store working aliquots at 4°C for up to one week.
Tag Info	N-terminal 10xHis-tagged
Mol. Weight	58.2 kDa
Protein Length	Full Length
Image	



Based on the SEQUEST from database of E.coli host and target protein, the LC-MS/MS Analysis result of CSB-CF018146MO could indicate that this peptide derived from E.coli-expressed Recombinant Mouse Phospholipase D3(Pld3) Pld3.



Based on the SEQUEST from database of E.coli host and target protein, the LC-MS/MS Analysis result of CSB-CF018146MO could indicate that this peptide derived from E.coli-expressed Recombinant Mouse Phospholipase D3(Pld3) Pld3.



(Tris-Glycine gel) Discontinuous SDS-PAGE (reduced) with 5% enrichment gel and 15% separation gel.

Shelf Life

The shelf life is related to many factors, storage state, buffer ingredients, storage temperature and the stability of the protein itself. Generally, the shelf life of liquid form is 6 months at -20°C/-80°C. The shelf life of lyophilized form is 12 months at -20°C/-80°C.