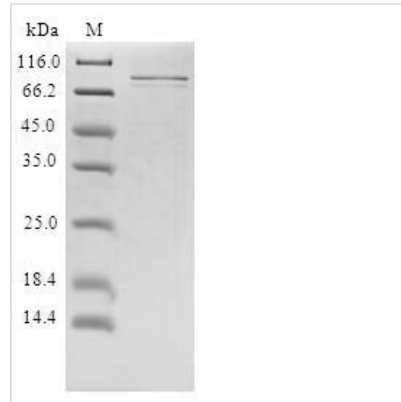




Recombinant Human Prolactin receptor (PRLR)

Product Code	CSB-CF018727HU
Relevance	This is a receptor for the anterior pituitary hormone prolactin (PRL). Acts as a prosurvival factor for spermatozoa by inhibiting sperm capacitation through suppression of SRC kinase activation and stimulation of AKT. Isoform 4 is unable to transduce prolactin signaling. Isoform 6 is unable to transduce prolactin signaling.
Abbreviation	Recombinant Human PRLR protein
Storage	The shelf life is related to many factors, storage state, buffer ingredients, storage temperature and the stability of the protein itself. Generally, the shelf life of liquid form is 6 months at -20°C/-80°C. The shelf life of lyophilized form is 12 months at -20°C/-80°C.
Uniprot No.	P16471
Product Type	Transmembrane Protein
Immunogen Species	Homo sapiens (Human)
Purity	Greater than 85% as determined by SDS-PAGE.
Sequence	<p>QLPPGKPEIFKCRSPNKETFTCWWRPGTDGGLPTNYSPTYHREGETLMHECP DYITGGPNSCHFQKQYTSWRTYIMMVNATNQMGSSFSDELYVDVTYIVQPD PPLELAVEVKQPEDRKPYLWIKWSPPTLIDLKTGWFTLLYEIRLKPEAAEWI HFAGQQTEFKILSLHPGQKYLQVRCKPDHGYWSAWSPATFIQIPSDFTMNDT TVWISVAVLSAVICLIIVWAVALKGYSMVTCIFPPVPGPKIKGFDAHLLKKGKSE ELLSALGCQDFPPTSDYEDLLVEYLEVDDSEDQHLMSVHSKEHPSQGMKPTY LDPDTSGRGSCDSPSLLSEKCEEPQANPSTFYDPEVIEKPENPETHTWDP QCISMEGKIPYFHAGGSKCSTWPLPQPSQHNPRSSYHNITDVCELAVGPAGA PATLLNEAGKDALKSSQTIKSREEGKATQQREVESFHSETDQDTPWLLPQEK PFGSAKPLDYVEIHKVNKDGALLPKQRENSGKPKKPGTPENKEYAKVSGV MDNNILVLPDPHAKNVACFEESAKEAPPSLEQNQAEEKALANFTATSSKCRLLQ LGGLDYLDLPACFTHSFH</p>
Research Area	Signal Transduction
Source	in vitro E.coli expression system
Target Names	PRLR
Expression Region	25-622aa
Notes	Repeated freezing and thawing is not recommended. Store working aliquots at 4°C for up to one week.
Tag Info	N-terminal 10xHis-tagged and C-terminal Myc-tagged
Mol. Weight	71.9kDa
Protein Length	Full Length of Mature Protein
Image	



(Tris-Glycine gel) Discontinuous SDS-PAGE (reduced) with 5% enrichment gel and 15% separation gel.

Reconstitution

We recommend that this vial be briefly centrifuged prior to opening to bring the contents to the bottom. Please reconstitute protein in deionized sterile water to a concentration of 0.1-1.0 mg/mL. We recommend to add 5-50% of glycerol (final concentration) and aliquot for long-term storage at $-20^{\circ}\text{C}/-80^{\circ}\text{C}$. Our default final concentration of glycerol is 50%. Customers could use it as reference.

Shelf Life

The shelf life is related to many factors, storage state, buffer ingredients, storage temperature and the stability of the protein itself.

Generally, the shelf life of liquid form is 6 months at $-20^{\circ}\text{C}/-80^{\circ}\text{C}$. The shelf life of lyophilized form is 12 months at $-20^{\circ}\text{C}/-80^{\circ}\text{C}$.