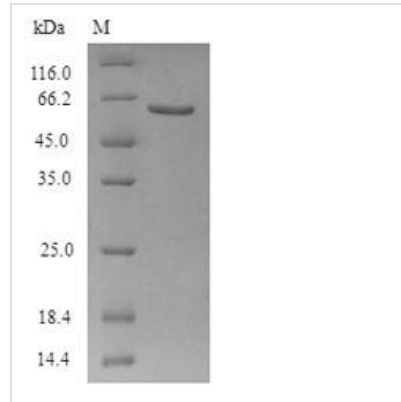




Recombinant Human Beta-2 adrenergic receptor (ADRB2) (G16R,E27Q)

| | |
|--------------------------|---|
| Product Code | CSB-CF001392HU(M) |
| Relevance | Beta-adrenergic receptors mediate the catecholamine-induced activation of adenylate cyclase through the action of G proteins. The beta-2-adrenergic receptor binds epinephrine with an approximately 30-fold greater affinity than it does norepinephrine. |
| Abbreviation | Recombinant Human ADRB2 protein (G16R,E27Q) |
| Storage | The shelf life is related to many factors, storage state, buffer ingredients, storage temperature and the stability of the protein itself. Generally, the shelf life of liquid form is 6 months at -20°C/-80°C. The shelf life of lyophilized form is 12 months at -20°C/-80°C. |
| Uniprot No. | P07550 |
| Product Type | Transmembrane Protein |
| Immunogen Species | Homo sapiens (Human) |
| Purity | ≥ 90% as determined by SDS-PAGE. |
| Sequence | MGQPGNGSAFLAPNRSHAPDHDVTQQRDEVWVVGMGIVMSLIVLAIVFGNV LVITAIKFERLQTVTNYFITSLACADLVMGLAVVPFGAAHILMKMWTFGNFWC EFWTSIDVLCVTASIELTCVIAVDRYFAITSPFKYQSLLTKNKARVILMVWIVSGL TSFLPIQMHWYRATHQEAINCYANETCCDFFTNQAYAIASSIVSFYVPLVIMVFV YSRVFQEAKRQLQKIDKSEGRFHVQNLSQLVEQDGRGTGHGLRRSSKFCLKEHK ALKTLGIIMGTFTLCWLPFFIVNIVHVIQDNLIRKEVYILLNWIGYVNSGFNPLIYC RSPDFRIAFQELLCLRRSSLKAYGNGYSSNGNTGEQSGYHVEQEKENKLLCE DLPGTEDFVGHQGTVPDNDISQGRNCSTNDSLL |
| Source | in vitro E.coli expression system |
| Protein Names | Beta-2 adrenoceptorShort name:Beta-2 adrenoceptor |
| Expression Region | 1-413aa(G16R,E27Q) |
| Notes | Repeated freezing and thawing is not recommended. Store working aliquots at 4°C for up to one week. |
| Tag Info | N-terminal 6xHis-SUMO-tagged |
| Mol. Weight | 62.5kDa |
| Protein Length | Full Length |
| Image | |



(Tris-Glycine gel) Discontinuous SDS-PAGE (reduced) with 5% enrichment gel and 15% separation gel.

Reconstitution

We recommend that this vial be briefly centrifuged prior to opening to bring the contents to the bottom. Please reconstitute protein in deionized sterile water to a concentration of 0.1-1.0 mg/mL. We recommend to add 5-50% of glycerol (final concentration) and aliquot for long-term storage at $-20^{\circ}\text{C}/-80^{\circ}\text{C}$. Our default final concentration of glycerol is 50%. Customers could use it as reference.

Shelf Life

The shelf life is related to many factors, storage state, buffer ingredients, storage temperature and the stability of the protein itself. Generally, the shelf life of liquid form is 6 months at $-20^{\circ}\text{C}/-80^{\circ}\text{C}$. The shelf life of lyophilized form is 12 months at $-20^{\circ}\text{C}/-80^{\circ}\text{C}$.