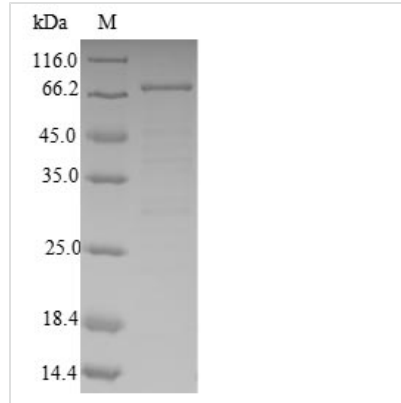


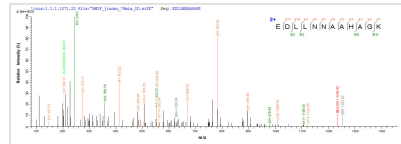


Recombinant Human 4-aminobutyrate aminotransferase, mitochondrial (ABAT)

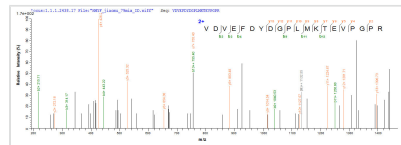
Product Code	CSB-EP001032HU
Relevance	Catalyzes the conversion of gamma-aminobutyrate and L-beta-aminoisobutyrate to succinate semialdehyde and methylmalonate semialdehyde, respectively. Can also convert delta-aminovalerate and beta-alanine.
Abbreviation	Recombinant Human ABAT protein
Storage	The shelf life is related to many factors, storage state, buffer ingredients, storage temperature and the stability of the protein itself. Generally, the shelf life of liquid form is 6 months at -20°C/-80°C. The shelf life of lyophilized form is 12 months at -20°C/-80°C.
Uniprot No.	P80404
Alias	(S)-3-amino-2-methylpropionate transaminase (EC:2.6.1.22) GABA aminotransferase
Product Type	Recombinant Protein
Immunogen Species	Homo sapiens (Human)
Purity	Greater than 90% as determined by SDS-PAGE.
Sequence	SQAAAKVDVEFDYDGPLMKTEVPGPRSQELMKQLNIIQNAEAVHFFCNYEESR GNLVDVDGNRMLDLYSQISSVPIGYSHPLLKLIQQPNASMFVNRPALGILP PENFVEKLRQSLLSVAPKGMSQLITMACGSCSNENALKTIFMWYRSKERGQR GFSQEELETMINQAPGCPDYSILSFMGAFHGRTMGCLATTHSKAIHKIDIPSF DWPIAPFPRLKYPLEEFVKENQQEEARCLEEVEDLIVKYRKKKKTVAGIIVEPIQ SEGGDNHASDDFFRKLRLDIARKHGCAFLVDEVQTGGGCTGKFWAHEHWGLD DPADVMTFSKKMMTGFFHKEEFRPNAPYRIFNTWLGDPSKNLLLAEVINIIR EDLLNNAAHAGKALLTGLLDLQARYPQFISRVGRGRGTFCSDFTPDDSIKRLILI ARNKGVVLGGCGDKSIRFRPTLVFRDHHHLFLNIFSDILADFK
Research Area	Neuroscience
Source	E.coli
Target Names	ABAT
Protein Names	Recommended name: 4-aminobutyrate aminotransferase, mitochondrial EC= 2.6.1.19 Alternative name(s): (S)-3-amino-2-methylpropionate transaminase EC= 2.6.1.22 GABA aminotransferase Short name= GABA-AT Gamma-amino-N-butyrate
Expression Region	29-500aa
Notes	Repeated freezing and thawing is not recommended. Store working aliquots at 4°C for up to one week.
Tag Info	N-terminal 10xHis-SUMO-tagged and C-terminal Myc-tagged
Mol. Weight	73.3kDa


Protein Length
Full Length of Mature Protein
Image


(Tris-Glycine gel) Discontinuous SDS-PAGE (reduced) with 5% enrichment gel and 15% separation gel.



Based on the SEQUEST from database of E.coli host and target protein, the LC-MS/MS Analysis result of CSB-EP001032HU could indicate that this peptide derived from E.coli-expressed Homo sapiens (Human) ABAT.



Based on the SEQUEST from database of E.coli host and target protein, the LC-MS/MS Analysis result of CSB-EP001032HU could indicate that this peptide derived from E.coli-expressed Homo sapiens (Human) ABAT.

Reconstitution

We recommend that this vial be briefly centrifuged prior to opening to bring the contents to the bottom. Please reconstitute protein in deionized sterile water to a concentration of 0.1-1.0 mg/mL. We recommend to add 5-50% of glycerol (final concentration) and aliquot for long-term storage at -20°C/-80°C. Our default final concentration of glycerol is 50%. Customers could use it as reference.

Shelf Life

The shelf life is related to many factors, storage state, buffer ingredients, storage temperature and the stability of the protein itself. Generally, the shelf life of liquid form is 6 months at -20°C/-80°C. The shelf life of lyophilized form is 12 months at -20°C/-80°C.