



Recombinant Mouse Proprotein convertase subtilisin/kexin type 5 (Pcsk5)

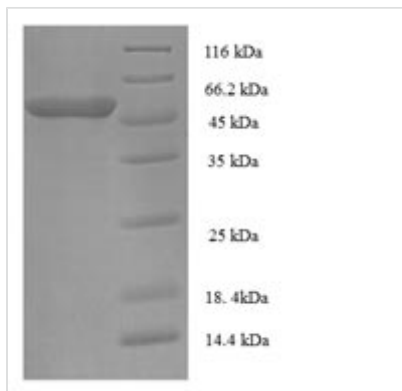
Product Code	CSB-EP017644MO
Relevance	Plays an essential role in pregnancy establishment by proteolytic activation of a number of important factors such as BMP2, CALD1 and alpha-integrins. Likely to represent a widespread endoprotease activity within the constitutive and regulated secretory pathway. Capable of cleavage at the RX(K/R)R consensus motif. May be responsible for the maturation of gastrointestinal peptides. May be involved in the cellular proliferation of adrenal cortex via the activation of growth factors .
Abbreviation	Recombinant Mouse Pcsk5 protein
Storage	The shelf life is related to many factors, storage state, buffer ingredients, storage temperature and the stability of the protein itself. Generally, the shelf life of liquid form is 6 months at -20°C/-80°C. The shelf life of lyophilized form is 12 months at -20°C/-80°C.
Uniprot No.	Q04592
Alias	Proprotein convertase 5 ;PC5Proprotein convertase 6 ;PC6Subtilisin-like proprotein convertase 6 ;SPC6Subtilisin/kexin-like protease PC5
Product Type	Recombinant Protein
Immunogen Species	Mus musculus (Mouse)
Purity	≥ 90% as determined by SDS-PAGE.
Sequence	DYDLSHAQSTYFNDPKWPSMWYMHCSDNTHPCQSDMNIEGAWKRGYTGKN IVVTILDDGIERTHPDLMQNYDALASCDVNGNDLDPMPRYDASNENKHGTRCA GEVAATANNSHCTVGIAFNAKIGGVRMLDGDVTDMVEAKSVSYNPQHVHIYSA SWGPDGKTVDGPAPLTRQAFENGVRMGRRLGVSFVWASGNGGRSKDH CSCDGYTNSIYTISISSTAESGKKPWYLEECSSTLATTYSSGESYDKKIITDLR QRCTDNHTGTSASAPMAAGIILALEANPFLTWRDVQHVVIVRTSRAGHLNAND WKTNAAGFKVSHLYGFGLMDAE
Research Area	Others
Source	E.coli
Target Names	Pcsk5
Protein Names	Recommended name: Proprotein convertase subtilisin/kexin type 5 EC= 3.4.21.- Alternative name(s): Proprotein convertase 5 Short name= PC5 Proprotein convertase 6 Short name= PC6 Subtilisin-like proprotein convertase 6
Expression Region	117-452aa
Notes	Repeated freezing and thawing is not recommended. Store working aliquots at 4°C for up to one week.
Tag Info	N-terminal 6xHis-SUMO-tagged



Mol. Weight 52.7kDa

Protein Length Full Length of Mature Protein

Image



(Tris-Glycine gel) Discontinuous SDS-PAGE (reduced) with 5% enrichment gel and 15% separation gel.

Reconstitution

We recommend that this vial be briefly centrifuged prior to opening to bring the contents to the bottom. Please reconstitute protein in deionized sterile water to a concentration of 0.1-1.0 mg/mL. We recommend to add 5-50% of glycerol (final concentration) and aliquot for long-term storage at -20°C/-80°C. Our default final concentration of glycerol is 50%. Customers could use it as reference.

Shelf Life

The shelf life is related to many factors, storage state, buffer ingredients, storage temperature and the stability of the protein itself. Generally, the shelf life of liquid form is 6 months at -20°C/-80°C. The shelf life of lyophilized form is 12 months at -20°C/-80°C.