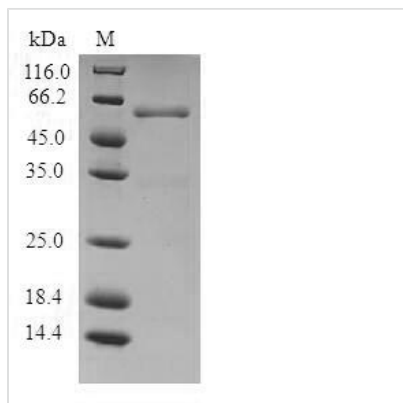




Recombinant Human Proteasome activator complex subunit 1 (PSME1)

Product Code	CSB-EP018915HU
Relevance	Implicated in immunoproteasome assembly and required for efficient antigen processing. The PA28 activator complex enhances the generation of class I binding peptides by altering the cleavage pattern of the proteasome.
Abbreviation	Recombinant Human PSME1 protein
Storage	The shelf life is related to many factors, storage state, buffer ingredients, storage temperature and the stability of the protein itself. Generally, the shelf life of liquid form is 6 months at -20°C/-80°C. The shelf life of lyophilized form is 12 months at -20°C/-80°C.
Uniprot No.	Q06323
Alias	11S regulator complex subunit alpha
Product Type	Recombinant Protein
Immunogen Species	Homo sapiens (Human)
Purity	≥ 90% as determined by SDS-PAGE.
Sequence	MAMLRVQPEAQAKVDVFRDLCTKTENLLGSYFPKKISELDAFLKEPALNEAN LSNLKAPLDIPVPDPVKEKEKEERKKQQEKEDKDEKKKGEDEDKGPPCGPVN CNEKIVVLLQRLKPEIKDVIEQLNLVTTWLQLQIPRIEDGNNFGVAVQEKFVFLM TSLHTKLEGFHTQISKYFSERGDVTKAAKQPHVGDYRQLVHELDEAEYRDIR LMVMEIRNAYAVLYDIILKNFEKLLKPRGETKGMIIY
Research Area	Cell Biology
Source	E.coli
Target Names	PSME1
Protein Names	Recommended name: Proteasome activator complex subunit 1 Alternative name(s): 11S regulator complex subunit alpha Short name= REG-alpha Activator of multicatalytic protease subunit 1 Interferon gamma up-regulated I-5111 protein
Expression Region	1-249aa
Notes	Repeated freezing and thawing is not recommended. Store working aliquots at 4°C for up to one week.
Tag Info	N-terminal GST-tagged
Mol. Weight	55.7kDa
Protein Length	Full Length
Image	



(Tris-Glycine gel) Discontinuous SDS-PAGE (reduced) with 5% enrichment gel and 15% separation gel.

Reconstitution

We recommend that this vial be briefly centrifuged prior to opening to bring the contents to the bottom. Please reconstitute protein in deionized sterile water to a concentration of 0.1-1.0 mg/mL. We recommend to add 5-50% of glycerol (final concentration) and aliquot for long-term storage at $-20^{\circ}\text{C}/-80^{\circ}\text{C}$. Our default final concentration of glycerol is 50%. Customers could use it as reference.

Shelf Life

The shelf life is related to many factors, storage state, buffer ingredients, storage temperature and the stability of the protein itself. Generally, the shelf life of liquid form is 6 months at $-20^{\circ}\text{C}/-80^{\circ}\text{C}$. The shelf life of lyophilized form is 12 months at $-20^{\circ}\text{C}/-80^{\circ}\text{C}$.