

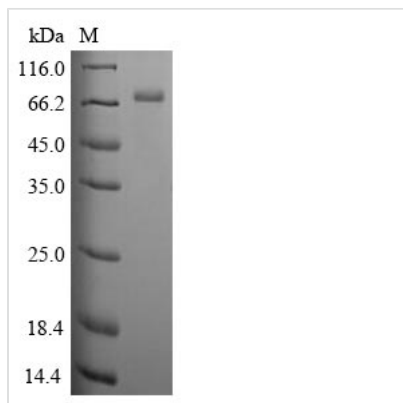


Recombinant Human Clusterin (CLU)

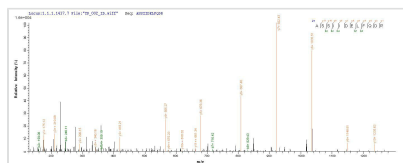
Product Code	CSB-EP005595HU
Relevance	<p>Isoform 1 functions as extracellular chaperone that prevents aggregation of nonnative proteins. Prevents stress-induced aggregation of blood plasma proteins. Inhibits formation of amyloid fibrils by APP, APOC2, B2M, CALCA, CSN3, SNCA and aggregation-prone LYZ variants (in vitro). Does not require ATP. Maintains partially unfolded proteins in a state appropriate for subsequent refolding by other chaperones, such as HSPA8/HSC70. Does not refold proteins by itself. Binding to cell surface receptors triggers internalization of the chaperone-client complex and subsequent lysosomal or proteasomal degradation. Secreted isoform 1 protects cells against apoptosis and against cytolysis by complement. Intracellular isoforms interact with ubiquitin and SCF (SKP1-CUL1-F-box protein) E3 ubiquitin-protein ligase complexes and promote the ubiquitination and subsequent proteasomal degradation of target proteins. Promotes proteasomal degradation of COMMD1 and IKBKB. Modulates NF-kappa-B transcriptional activity. Nuclear isoforms promote apoptosis. Mitochondrial isoforms suppress BAX-dependent release of cytochrome c into the cytoplasm and inhibit apoptosis. Plays a role in the regulation of cell proliferation.</p>
Abbreviation	Recombinant Human CLU protein
Storage	The shelf life is related to many factors, storage state, buffer ingredients, storage temperature and the stability of the protein itself. Generally, the shelf life of liquid form is 6 months at -20°C/-80°C. The shelf life of lyophilized form is 12 months at -20°C/-80°C.
Uniprot No.	P10909
Product Type	Recombinant Protein
Immunogen Species	Homo sapiens (Human)
Purity	≥ 85% as determined by SDS-PAGE.
Sequence	<p>DQTVSDNELQEMSNQGSKYVNKEIQNAVNGVKQIKTLIEKTNEERKTLLSNLEE AKKKKEDALNETRESETKLKE LPGVCNETMMALWEECKPCLKQTCKMIFYARV CRSGSGLVGRQLEEF LNQSSPFYFWMNGDRIDSLLENDRQQTHMLDVMQDH FSRASSIIDELFQDRFFFTREPQDTYHYLPFSLPHRRPHFFFPKSRIVRSLMPFSP YEPLNFHAMFQPFLEMIHEAQQAMD IHFHSPAFQHPPTEFIREGDDDR TVCRE IRHNSTGCLRMKDQCDKCREILSVDCSTNNPSQAKLRRELDES LQVAERLTRK YNELLKSYQWKMLNTSSLLEQLNEQFNWVSR LANLTQGEDQYYLRVTTVASH TSDSDVPSGVTEVVVKLFDS DPITVTPVEVSRKNPKFMETVAEKALQEYRKK HREE</p>
Research Area	Immunology
Source	E.coli
Target Names	CLU
Protein Names	Ageing-associated gene 4 protein Apolipoprotein J



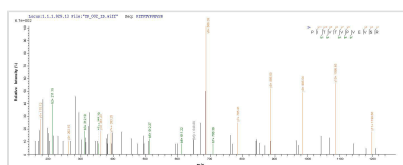
Expression Region	23-449aa
Notes	Repeated freezing and thawing is not recommended. Store working aliquots at 4°C for up to one week.
Tag Info	N-terminal 10xHis-SUMO-tagged and C-terminal Myc-tagged
Mol. Weight	70.1kDa
Protein Length	Full Length of Mature Protein

Image


(Tris-Glycine gel) Discontinuous SDS-PAGE (reduced) with 5% enrichment gel and 15% separation gel.



Based on the SEQUEST from database of E.coli host and target protein, the LC-MS/MS Analysis result of CSB-EP005595HU could indicate that this peptide derived from E.coli-expressed Homo sapiens (Human) CLU.



Based on the SEQUEST from database of E.coli host and target protein, the LC-MS/MS Analysis result of CSB-EP005595HU could indicate that this peptide derived from E.coli-expressed Homo sapiens (Human) CLU.

Reconstitution

We recommend that this vial be briefly centrifuged prior to opening to bring the contents to the bottom. Please reconstitute protein in deionized sterile water to a concentration of 0.1-1.0 mg/mL. We recommend to add 5-50% of glycerol (final concentration) and aliquot for long-term storage at -20°C/-80°C. Our default final concentration of glycerol is 50%. Customers could use it as reference.

Shelf Life

The shelf life is related to many factors, storage state, buffer ingredients, storage temperature and the stability of the protein itself. Generally, the shelf life of liquid form is 6 months at -20°C/-80°C. The shelf life of lyophilized form is 12 months at -20°C/-80°C.