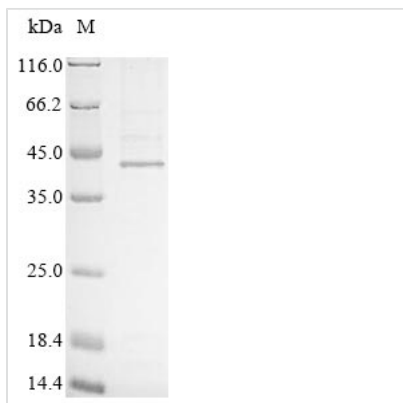


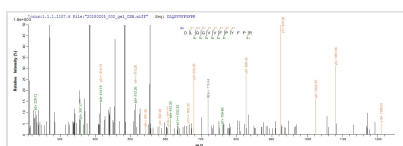


# Recombinant Human Hyaluronan and proteoglycan link protein 1 (HAPLN1)

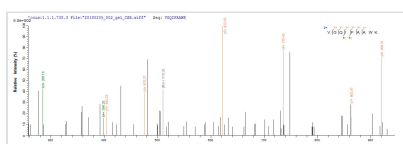
<b>Product Code</b>	CSB-MP010130HU
<b>Relevance</b>	Stabilizes the aggregates of proteoglycan monomers with hyaluronic acid in the extracellular cartilage matrix.
<b>Abbreviation</b>	Recombinant Human HAPLN1 protein
<b>Storage</b>	The shelf life is related to many factors, storage state, buffer ingredients, storage temperature and the stability of the protein itself. Generally, the shelf life of liquid form is 6 months at -20°C/-80°C. The shelf life of lyophilized form is 12 months at -20°C/-80°C.
<b>Uniprot No.</b>	P10915
<b>Product Type</b>	Recombinant Protein
<b>Immunogen Species</b>	Homo sapiens (Human)
<b>Purity</b>	≥ 85% as determined by SDS-PAGE.
<b>Sequence</b>	DHLSDNYTLHDHRAIHQAENGPHELLVEAEQAKVFSHRGGNVTLPCKFYRDPT AFSGSIHKIRIKWTKLTSYDLKEVDVFSMGYHKKTYGGYQGRVFLKGGSDSD ASLVITDLTLEDYGRYKCEVIEGLEDDTVVVALDLQGVVFPYFPRLGRYNLNFH EAQQAACLDQDAVIASFDQLYDAWRGGLDWCNAGWLSDGSVQYPITKPREPC GGQNTVPGVRNYGFWDKDKSRYDVFCSNFRFYLIHPTKLTIDEAVQA CLNDGAQIAKVGQIFAAWKILGYDRCDAGWLADGSVRYPISRPRRRCSPTAA VRFVGFDPDKKHKLYGVYCFRAYN
<b>Research Area</b>	Signal Transduction
<b>Source</b>	Mammalian cell
<b>Target Names</b>	HAPLN1
<b>Protein Names</b>	Cartilage-linking protein 1 Short name: Cartilage-link protein Proteoglycan link protein CRTL1
<b>Expression Region</b>	16-354aa
<b>Notes</b>	Repeated freezing and thawing is not recommended. Store working aliquots at 4°C for up to one week.
<b>Tag Info</b>	N-terminal 10xHis-tagged
<b>Mol. Weight</b>	41.0 kDa
<b>Protein Length</b>	Full Length of Mature Protein
<b>Image</b>	



(Tris-Glycine gel) Discontinuous SDS-PAGE (reduced) with 5% enrichment gel and 15% separation gel.



Based on the SEQUEST from database of Mammalian Cell host and target protein, the LC-MS/MS Analysis result of CSB-MP010130HU could indicate that this peptide derived from Mammalian Cell-expressed Homo sapiens (Human) HAPLN1.



Based on the SEQUEST from database of Mammalian Cell host and target protein, the LC-MS/MS Analysis result of CSB-MP010130HU could indicate that this peptide derived from Mammalian Cell-expressed Homo sapiens (Human) HAPLN1.

## Reconstitution

We recommend that this vial be briefly centrifuged prior to opening to bring the contents to the bottom. Please reconstitute protein in deionized sterile water to a concentration of 0.1-1.0 mg/mL. We recommend to add 5-50% of glycerol (final concentration) and aliquot for long-term storage at -20°C/-80°C. Our default final concentration of glycerol is 50%. Customers could use it as reference.

## Shelf Life

The shelf life is related to many factors, storage state, buffer ingredients, storage temperature and the stability of the protein itself. Generally, the shelf life of liquid form is 6 months at -20°C/-80°C. The shelf life of lyophilized form is 12 months at -20°C/-80°C.