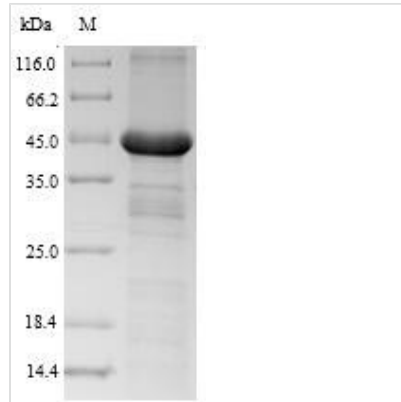


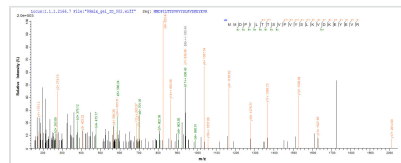


Recombinant Human Growth hormone receptor (GHR), partial

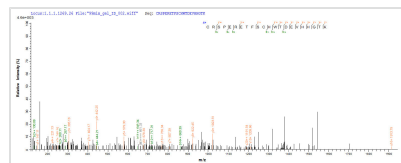
Product Code	CSB-EP009411HU
Relevance	Receptor for pituitary gland growth hormone involved in regulating postnatal body growth. On ligand binding, couples to the JAK2/STAT5 pathway
Abbreviation	Recombinant Human GHR protein, partial
Storage	The shelf life is related to many factors, storage state, buffer ingredients, storage temperature and the stability of the protein itself. Generally, the shelf life of liquid form is 6 months at -20°C/-80°C. The shelf life of lyophilized form is 12 months at -20°C/-80°C.
Uniprot No.	P10912
Alias	Somatotropin receptor
Product Type	Recombinant Protein
Immunogen Species	Homo sapiens (Human)
Purity	Greater than 90% as determined by SDS-PAGE.
Sequence	FSGSEATAAILS RAPWSLQSVNPGLKTNSSKEPKFTKCRSPERETF SCHWTDE VHHGTKNLGPIQLFYTRRNTQEWTQEWKECPDYVSAGENSCYFNSSFTSIWI PYCIKLTSNGGTVDEKCFVDEIVQPDPIALNWTL LNVS LTGIHADIQVRWEA PRNADIQKGMVLE YELQYKEVNETKWKMMDPILTT SVPVYSLKVDKEYEVR VRSKQRNSGNYGEFSEVLYVTLPQMSQFTCEEDFY
Research Area	Neuroscience
Source	E.coli
Target Names	GHR
Expression Region	19-264aa
Notes	Repeated freezing and thawing is not recommended. Store working aliquots at 4°C for up to one week.
Tag Info	N-terminal 6xHis-SUMO-tagged
Mol. Weight	44.4kDa
Protein Length	Extracellular Domain
Image	



(Tris-Glycine gel) Discontinuous SDS-PAGE (reduced) with 5% enrichment gel and 15% separation gel.



Based on the SEQUEST from database of E.coli host and target protein, the LC-MS/MS Analysis result of CSB-EP009411HU could indicate that this peptide derived from E.coli-expressed Homo sapiens (Human) GHR.



Based on the SEQUEST from database of E.coli host and target protein, the LC-MS/MS Analysis result of CSB-EP009411HU could indicate that this peptide derived from E.coli-expressed Homo sapiens (Human) GHR.

Reconstitution

We recommend that this vial be briefly centrifuged prior to opening to bring the contents to the bottom. Please reconstitute protein in deionized sterile water to a concentration of 0.1-1.0 mg/mL. We recommend to add 5-50% of glycerol (final concentration) and aliquot for long-term storage at -20°C/-80°C. Our default final concentration of glycerol is 50%. Customers could use it as reference.

Shelf Life

The shelf life is related to many factors, storage state, buffer ingredients, storage temperature and the stability of the protein itself. Generally, the shelf life of liquid form is 6 months at -20°C/-80°C. The shelf life of lyophilized form is 12 months at -20°C/-80°C.