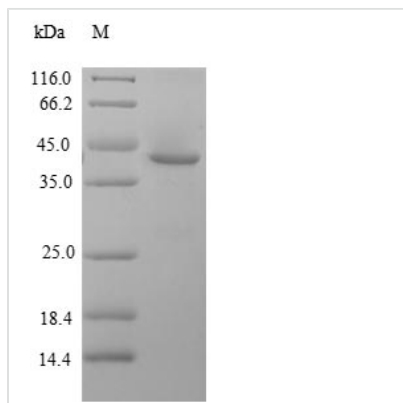




Recombinant Human Zinc finger protein GLI2 (GLI2), partial

Product Code	CSB-EP009500HU
Relevance	Functions as transcription regulator in the hedgehog (Hh) pathway (PubMed:18455992). Functions as transcriptional activator (PubMed:9557682, PubMed:19878745, PubMed:24311597). May also function as transcriptional repressor (By similarity). Requires STK36 for full transcriptional activator activity. Required for normal embryonic development (PubMed:15994174, PubMed:20685856).
Abbreviation	Recombinant Human GLI2 protein, partial
Storage	The shelf life is related to many factors, storage state, buffer ingredients, storage temperature and the stability of the protein itself. Generally, the shelf life of liquid form is 6 months at -20°C/-80°C. The shelf life of lyophilized form is 12 months at -20°C/-80°C.
Uniprot No.	P10070
Alias	GLI family zinc finger protein 2 Tax helper protein
Product Type	Recombinant Protein
Immunogen Species	Homo sapiens (Human)
Purity	≥ 90% as determined by SDS-PAGE.
Sequence	EQLADLKEDLDRDDCKQEAENVVIYETNCHWEDCTKEYDQTQEQQLVHHINNEHIH GEKKEFVCRWQACTREQKPFKAQYMLVVHMRRHTGEKPHKCTFEGCSKAYS RLENLKTHLRSHTGEKPYVCEHEGCNKAFSNASDRAKHQNRTHSNEKPYICKI PGCTKRYTDPSSLRKHVKT VHGPDAHVTKKQRNDVHLRTPLLKENG DSEAGT EPGGPESTEASSTSQAVEDCL
Research Area	Epigenetics and Nuclear Signaling
Source	E.coli
Target Names	GLI2
Protein Names	Recommended name: Zinc finger protein GLI2 Alternative name(s): Tax helper protein
Expression Region	412-641aa
Notes	Repeated freezing and thawing is not recommended. Store working aliquots at 4°C for up to one week.
Tag Info	N-terminal 6xHis-SUMO-tagged
Mol. Weight	42.5kDa
Protein Length	Partial
Image	



(Tris-Glycine gel) Discontinuous SDS-PAGE (reduced) with 5% enrichment gel and 15% separation gel.

Reconstitution

We recommend that this vial be briefly centrifuged prior to opening to bring the contents to the bottom. Please reconstitute protein in deionized sterile water to a concentration of 0.1-1.0 mg/mL. We recommend to add 5-50% of glycerol (final concentration) and aliquot for long-term storage at -20°C/-80°C. Our default final concentration of glycerol is 50%. Customers could use it as reference.

Shelf Life

The shelf life is related to many factors, storage state, buffer ingredients, storage temperature and the stability of the protein itself. Generally, the shelf life of liquid form is 6 months at -20°C/-80°C. The shelf life of lyophilized form is 12 months at -20°C/-80°C.