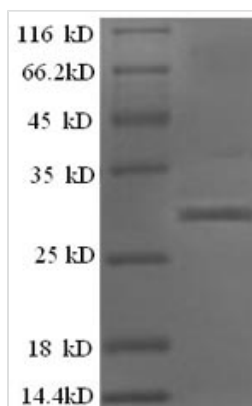




Recombinant Human Islet amyloid polypeptide protein (IAPP), partial

Product Code	CSB-EP010931HU
Relevance	This gut peptide inhibits exocrine pancreatic secretion, has a vasoconstrictory action and inhibits jejunal and colonic mobility.
Storage	The shelf life is related to many factors, storage state, buffer ingredients, storage temperature and the stability of the protein itself. Generally, the shelf life of liquid form is 6 months at -20°C/-80°C. The shelf life of lyophilized form is 12 months at -20°C/-80°C.
Uniprot No.	P10997
Alias	Recommended name: Islet amyloid polypeptide Alternative name(s): Amylin Diabetes-associated peptide Short name: DAP Insulinoma amyloid peptide
Product Type	Recombinant Protein
Immunogen Species	Homo sapiens (Human)
Purity	Greater than 90% as determined by SDS-PAGE.
Sequence	KCNTATCATQRLANFLVHSSNFGAILSSTNVGSNTY
Research Area	Signal Transduction
Source	E.coli
Target Names	IAPP
Expression Region	34-70aa
Notes	Repeated freezing and thawing is not recommended. Store working aliquots at 4°C for up to one week.
Tag Info	N-terminal GST-tagged
Mol. Weight	31.4kDa
Protein Length	partial

Image



(Tris-Glycine gel) Discontinuous SDS-PAGE (reduced) with 5% enrichment gel and 15% separation gel.



Reconstitution

We recommend that this vial be briefly centrifuged prior to opening to bring the contents to the bottom. Please reconstitute protein in deionized sterile water to a concentration of 0.1-1.0 mg/mL. We recommend to add 5-50% of glycerol (final concentration) and aliquot for long-term storage at -20°C/-80°C. Our default final concentration of glycerol is 50%. Customers could use it as reference.

Shelf Life

The shelf life is related to many factors, storage state, buffer ingredients, storage temperature and the stability of the protein itself. Generally, the shelf life of liquid form is 6 months at -20°C/-80°C. The shelf life of lyophilized form is 12 months at -20°C/-80°C.