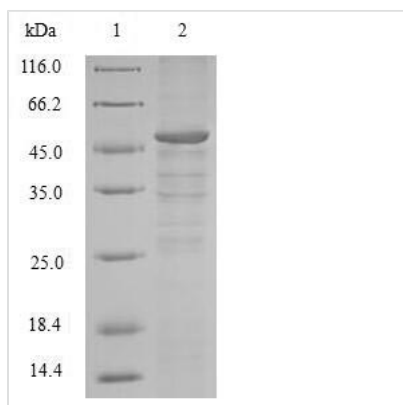




Recombinant Human G2/mitotic-specific cyclin-B1 (CCNB1)

Product Code	CSB-BP004806HU
Relevance	Essential for the control of the cell cycle at the G2/M (mitosis) transition.
Abbreviation	Recombinant Human CCNB1 protein
Storage	The shelf life is related to many factors, storage state, buffer ingredients, storage temperature and the stability of the protein itself. Generally, the shelf life of liquid form is 6 months at -20°C/-80°C. The shelf life of lyophilized form is 12 months at -20°C/-80°C.
Uniprot No.	P14635
Product Type	Recombinant Protein
Immunogen Species	Homo sapiens (Human)
Purity	≥ 90% as determined by SDS-PAGE.
Sequence	MALRVTRNSKINAENKAKINMAGAKRVPTAPAATSKPGLRPRTALGDIGNKVS EQLQAKMPMKKEAKPSATGKVIDKCLKPLEKVPMLVPVPVSEPVPEPEPEPE PEPVKEEKLSPEPILVDTASPSMETSGCAPAEEDLCQAFSDVILAVNDVDAED GADPNLCSEYVKDIYAYLRQLEEEQAVRPKYLLGREVTGNMRAILIDWLQVQ MKFRLLQETMYMTVSIIDRFMQNNCVPKKMLQLVGVVTAMFIASKYEEMYPPEI GDFAFVTDNTYTKHQIRQMEMKILRALNFGGLRPLPLHFLRRASKIGEVDVEQ HTLAKYLMELTMLDYDMVHFPPSQIAAGAFCLALKILDNGEWTPTLQHLYSYTE ESLLPVMQHLAKNVVMVNQGLTKHMTVKNKYATSKHAKISTLPQLNSALVQDL AKAVAKV
Research Area	Cell Biology
Source	Baculovirus
Target Names	CCNB1
Protein Names	Recommended name: G2/mitotic-specific cyclin-B1
Expression Region	1-433aa
Notes	Repeated freezing and thawing is not recommended. Store working aliquots at 4°C for up to one week.
Tag Info	N-terminal 10xHis-tagged and C-terminal Myc-tagged
Mol. Weight	52.3kDa
Protein Length	Full Length
Image	



(Tris-Glycine gel) Discontinuous SDS-PAGE (reduced) with 5% enrichment gel and 15% separation gel.

Reconstitution

We recommend that this vial be briefly centrifuged prior to opening to bring the contents to the bottom. Please reconstitute protein in deionized sterile water to a concentration of 0.1-1.0 mg/mL. We recommend to add 5-50% of glycerol (final concentration) and aliquot for long-term storage at -20°C/-80°C. Our default final concentration of glycerol is 50%. Customers could use it as reference.

Shelf Life

The shelf life is related to many factors, storage state, buffer ingredients, storage temperature and the stability of the protein itself. Generally, the shelf life of liquid form is 6 months at -20°C/-80°C. The shelf life of lyophilized form is 12 months at -20°C/-80°C.