

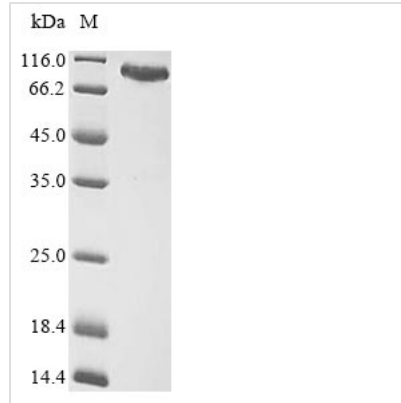


Recombinant Human Eukaryotic peptide chain release factor GTP-binding subunit ERF3A (GSPT1)

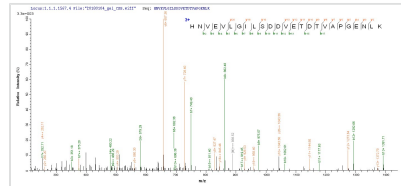
Product Code	CSB-BP009966HU
Relevance	Involved in translation termination in response to the termination codons UAA, UAG and UGA. Stimulates the activity of ERF1. Involved in regulation of mammalian cell growth. Component of the transient SURF complex which recruits UPF1 to stalled ribosomes in the context of nonsense-mediated decay (NMD) of mRNAs containing premature stop codons.
Abbreviation	Recombinant Human GSPT1 protein
Storage	The shelf life is related to many factors, storage state, buffer ingredients, storage temperature and the stability of the protein itself. Generally, the shelf life of liquid form is 6 months at -20°C/-80°C. The shelf life of lyophilized form is 12 months at -20°C/-80°C.
Uniprot No.	P15170
Product Type	Recombinant Protein
Immunogen Species	Homo sapiens (Human) parvovirus B19 (isolate AU)
Purity	Greater than 85% as determined by SDS-PAGE.
Sequence	MELSEPIVENGETEMSPSEESWEHKEEISEAEPGGGSLGDGRPPEESAHEMME EEEEIPKPKSVVAPPGAPKKEHVNNVFIGHVVDAGKSTIGGQIMYLTMVMDKRTL EKYEREAKEKNRETWYLSWALDTNQEERDKGKTVEVGRAYFETEKKHFTILD APGHKSFVPMIGGASQADLAVLVISARKGEFETGFEKGGQTRHAMLAKTA GVKHLIVLINKMDDPTVNWSNEREYEECKEKLVPFLKKVGFNPKKDIHFMPCSG LTGANLKEQSDFCPWYIGLPFIPYLDNLNPNFNRSVDGPIRLPIVDKYKDMGTVV LGKLESGSICKGQQLVMMPNKHNVVVLGILSDDVETDTVAPGENLKIRLKGIEE EEILPGFILCDPNNLCHSGRTFDAQIVIIHKSIIICPGYNAVLHIHTCIEEVEITALIC LVDKKSGEKSCTRPRFVKQDQVCIARLRTAGTICLETFKDFPQMGRFTLRDEG KTIAIGKVLKLVPEKD
Research Area	Epigenetics and Nuclear Signaling
Source	Baculovirus
Target Names	GSPT1
Protein Names	G1 to S phase transition protein 1 homolog ERF3A
Expression Region	1-499aa
Notes	Repeated freezing and thawing is not recommended. Store working aliquots at 4°C for up to one week.
Tag Info	N-terminal MBP-tagged and C-terminal 6xHis-tagged
Mol. Weight	99.8 kDa


Protein Length

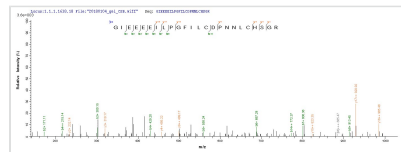
Full Length

Image


(Tris-Glycine gel) Discontinuous SDS-PAGE (reduced) with 5% enrichment gel and 15% separation gel.



Based on the SEQUEST from database of Baculovirus host and target protein, the LC-MS/MS Analysis result of CSB-BP009966HU could indicate that this peptide derived from Baculovirus-expressed Homo sapiens (Human) parvovirus B19 (isolate AU) GSPT1.



Based on the SEQUEST from database of Baculovirus host and target protein, the LC-MS/MS Analysis result of CSB-BP009966HU could indicate that this peptide derived from Baculovirus-expressed Homo sapiens (Human) parvovirus B19 (isolate AU) GSPT1.

Reconstitution

We recommend that this vial be briefly centrifuged prior to opening to bring the contents to the bottom. Please reconstitute protein in deionized sterile water to a concentration of 0.1-1.0 mg/mL. We recommend to add 5-50% of glycerol (final concentration) and aliquot for long-term storage at -20°C/-80°C. Our default final concentration of glycerol is 50%. Customers could use it as reference.

Shelf Life

The shelf life is related to many factors, storage state, buffer ingredients, storage temperature and the stability of the protein itself. Generally, the shelf life of liquid form is 6 months at -20°C/-80°C. The shelf life of lyophilized form is 12 months at -20°C/-80°C.