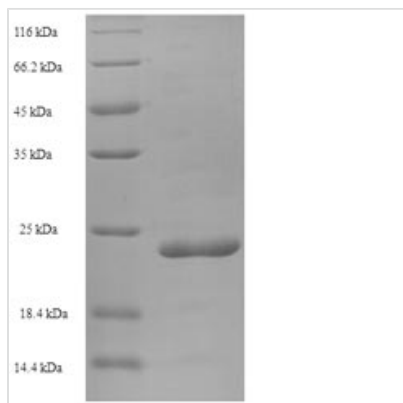




Recombinant Human Elafin (PI3)

Product Code	CSB-EP017952HU
Relevance	Neutrophil and pancreatic elastase-specific inhibitor of skin. It may prevent elastase-mediated tissue proteolysis.
Abbreviation	Recombinant Human PI3 protein
Storage	The shelf life is related to many factors, storage state, buffer ingredients, storage temperature and the stability of the protein itself. Generally, the shelf life of liquid form is 6 months at -20°C/-80°C. The shelf life of lyophilized form is 12 months at -20°C/-80°C.
Uniprot No.	P19957
Alias	Elastase-specific inhibitor ;ESI Peptidase inhibitor 3 ;PI-3;Protease inhibitor WAP3 Skin-derived antileukoproteinase ;SKALPWAP four-disulfide core domain protein 14
Product Type	Recombinant Protein
Immunogen Species	Homo sapiens (Human)
Purity	Greater than 90% as determined by SDS-PAGE.
Sequence	AQEPVKGPVSTKPGSCPIILIRCAMLNPPNRCLKDTCPGIKKCCEGSCGMAC FVPQ
Research Area	Signal Transduction
Source	E.coli
Target Names	PI3
Protein Names	Recommended name: Elafin Alternative name(s): Elastase-specific inhibitor Short name= ESI Peptidase inhibitor 3 Short name= PI-3 Protease inhibitor WAP3 Skin-derived antileukoproteinase Short name= SKALP WAP fo
Expression Region	61-117aa
Notes	Repeated freezing and thawing is not recommended. Store working aliquots at 4°C for up to one week.
Tag Info	N-terminal 6xHis-SUMO-tagged
Mol. Weight	22.0kDa
Protein Length	Full Length of Mature Protein
Image	



(Tris-Glycine gel) Discontinuous SDS-PAGE (reduced) with 5% enrichment gel and 15% separation gel.

Reconstitution

We recommend that this vial be briefly centrifuged prior to opening to bring the contents to the bottom. Please reconstitute protein in deionized sterile water to a concentration of 0.1-1.0 mg/mL. We recommend to add 5-50% of glycerol (final concentration) and aliquot for long-term storage at -20°C/-80°C. Our default final concentration of glycerol is 50%. Customers could use it as reference.

Shelf Life

The shelf life is related to many factors, storage state, buffer ingredients, storage temperature and the stability of the protein itself. Generally, the shelf life of liquid form is 6 months at -20°C/-80°C. The shelf life of lyophilized form is 12 months at -20°C/-80°C.