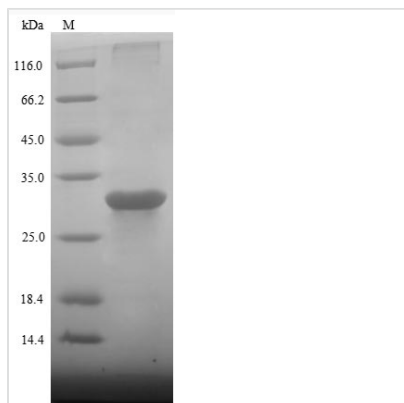




Recombinant Pig Growth hormone receptor (GHR), partial

Product Code	CSB-EP009411PI
Relevance	Receptor for pituitary gland growth hormone involved in regulating postnatal body growth. On ligand binding, couples to, and activates the JAK2/STAT5 pathway. The soluble form (GHBP) acts as a reservoir of growth hormone in plasma and may be a modulator/inhibitor of GH signaling.
Abbreviation	Recombinant Pig GHR protein, partial
Storage	The shelf life is related to many factors, storage state, buffer ingredients, storage temperature and the stability of the protein itself. Generally, the shelf life of liquid form is 6 months at -20°C/-80°C. The shelf life of lyophilized form is 12 months at -20°C/-80°C.
Uniprot No.	P19756
Product Type	Recombinant Protein
Immunogen Species	Sus scrofa (Pig)
Purity	≥ 85% as determined by SDS-PAGE.
Sequence	FSGSEATPAVLVRASQSLQRVHPGLETNSSGKPKFTKCRSPELETFSCHWTD GVRHGLQSPGSIQLFYIRRSTQEWTKQEWKECPDYVSAGENSCYFNSSYTSIWI PYCIKLTSSNGGTVDQKCFVVEEIVQPDPIGLNWTLLNISLTGIHADIQVRWEPP PNADVQKGWIVLEYELQYKEVNETQWKMMDPVLSTSPVYSLRLDKEYEVRV RSRQRNSEKYGEFSEVLYVTLPQMSPFACEEDFR
Research Area	Cell Biology
Source	E.coli
Target Names	GHR
Protein Names	Somatotropin receptor
Expression Region	19-264aa
Notes	Repeated freezing and thawing is not recommended. Store working aliquots at 4°C for up to one week.
Tag Info	C-terminal 6xHis-tagged
Mol. Weight	30.3 kDa
Protein Length	Partial
Image	



(Tris-Glycine gel) Discontinuous SDS-PAGE (reduced) with 5% enrichment gel and 15% separation gel.

Reconstitution

We recommend that this vial be briefly centrifuged prior to opening to bring the contents to the bottom. Please reconstitute protein in deionized sterile water to a concentration of 0.1-1.0 mg/mL. We recommend to add 5-50% of glycerol (final concentration) and aliquot for long-term storage at -20°C/-80°C. Our default final concentration of glycerol is 50%. Customers could use it as reference.

Shelf Life

The shelf life is related to many factors, storage state, buffer ingredients, storage temperature and the stability of the protein itself. Generally, the shelf life of liquid form is 6 months at -20°C/-80°C. The shelf life of lyophilized form is 12 months at -20°C/-80°C.