

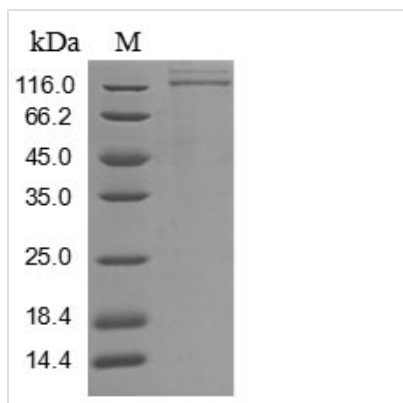


Recombinant Human Vascular endothelial growth factor receptor 1 (FLT1), partial (Active)

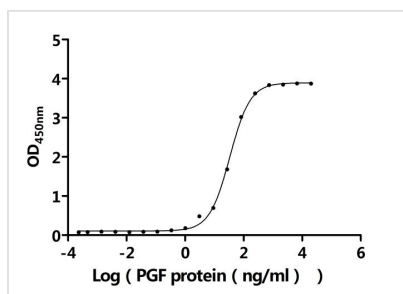
| | |
|----------------------------|---|
| Product Code | CSB-MP008732HU |
| Abbreviation | Recombinant Human FLT1 protein, partial (Active) |
| Storage | The shelf life is related to many factors, storage state, buffer ingredients, storage temperature and the stability of the protein itself. Generally, the shelf life of liquid form is 6 months at -20°C/-80°C. The shelf life of lyophilized form is 12 months at -20°C/-80°C. |
| Uniprot No. | P17948 |
| Form | Lyophilized powder |
| Storage Buffer | Lyophilized from a 0.2 µm filtered PBS, 6% Trehalose, pH 7.4 |
| Product Type | Recombinant Protein |
| Immunogen Species | Homo sapiens (Human) |
| Biological Activity | Measured by its binding ability in a functional ELISA. Immobilized Human FLT1 protein at 2 µg/mL can bind Human PGF (CSB-MP017854HU) protein. The EC50 is 31.39-36.32 ng/mL. |
| Purity | Greater than 90% as determined by SDS-PAGE. |
| Sequence | SKLKDPELSLKGQTQHIMQAGQTLHLQCRGEEAAHKWVSLPEMVSKESERLSITKS ACGRNGKQFCSTLTLNTAQANHTGFYSCKYLAVPTSKKKETESAIYIFISDTGR PFVEMYSEIPEIIHMTEGRELVIPCRVTSPNITVTLKKFPLDTLIPDGKRIIWDSRK GFIISNATYKEIGLLTCEATVNGHLYKTNLTHRQTNTIIDVQISTPRPVKLLRGH TLVLNCTATTPLNTRVQMTWSYPDEKNKRASVRRRIDQSNSHANIFYSVLTIDK MQNKDKGLYTCRVRSGPSFKSVNTSVHIYDKAFITVKHRKQQVLETVAGKRSY RLSMKVKAFPSPEVVWLKDGLPATEKSARYLTRGYSLIKDVTEEDAGNYTILL SIKQSNVFNLTATLIVNVKPKIYEKAVSSFPDPALYPLGSRQILTCTAYGIPQPT IKWFWHPCNHNHSEARCDFCNNEESFILDADSNMGNRIESITQRMAIIEGKN KMASTLVVADSRISGIYICIASNKVGTVGRNISFYITDVPNGFHVNLEKMPTEGE DLKLSCTVNKFLYRDVTWILLRTVNNRTMHYSISKQKMAITKEHSITLNLTIMNV SLQDSGTYACRARNVYTGEEILQKKEITIRDQEAPYLLRNLSDHTVAISSSTLTD CHANGVPEPQITWFKNNHKIQQEPGIILGPGSSTLFIERVTEEDEGVYHCKATN QKGSVESSAYLTVQGTSDKSN |
| Source | Mammalian cell |
| Target Names | FLT1 |
| Expression Region | 27-756aa |
| Notes | Repeated freezing and thawing is not recommended. Store working aliquots at 4°C for up to one week. |
| Tag Info | C-terminal 6xHis-tagged |
| Mol. Weight | 82.2 kDa |


Protein Length

Partial

Image


(Tris-Glycine gel) Discontinuous SDS-PAGE (reduced) with 5% enrichment gel and 15% separation gel.


Activity

Measured by its binding ability in a functional ELISA. Immobilized Human FLT1 protein at 2 $\mu\text{g/ml}$ can bind Human PGF (CSB-MP017854HU) protein. The EC_{50} is 31.39-36.32 ng/mL .

Endotoxin

Less than 1.0 EU/ μg as determined by LAL method.

Reconstitution

We recommend that this vial be briefly centrifuged prior to opening to bring the contents to the bottom. Please reconstitute protein in deionized sterile water to a concentration of 0.1-1.0 mg/mL . We recommend to add 5-50% of glycerol (final concentration) and aliquot for long-term storage at $-20^{\circ}\text{C}/-80^{\circ}\text{C}$. Our default final concentration of glycerol is 50%. Customers could use it as reference.

Shelf Life

The shelf life is related to many factors, storage state, buffer ingredients, storage temperature and the stability of the protein itself.

Generally, the shelf life of liquid form is 6 months at $-20^{\circ}\text{C}/-80^{\circ}\text{C}$. The shelf life of lyophilized form is 12 months at $-20^{\circ}\text{C}/-80^{\circ}\text{C}$.