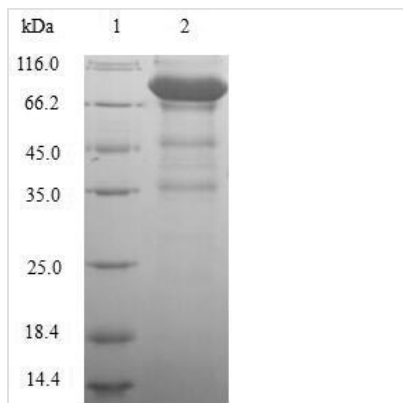


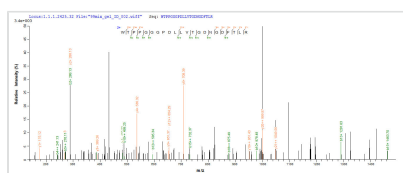


# Recombinant Human Lymphocyte activation gene 3 protein (LAG3), partial

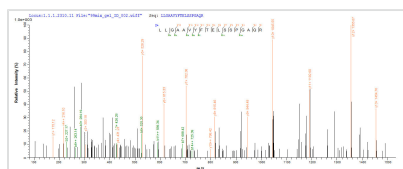
<b>Product Code</b>	CSB-EP012719HU1
<b>Relevance</b>	Involved in lymphocyte activation. Binds to HLA class-II antigens.
<b>Abbreviation</b>	Recombinant Human LAG3 protein, partial
<b>Storage</b>	The shelf life is related to many factors, storage state, buffer ingredients, storage temperature and the stability of the protein itself. Generally, the shelf life of liquid form is 6 months at -20°C/-80°C. The shelf life of lyophilized form is 12 months at -20°C/-80°C.
<b>Uniprot No.</b>	P18627
<b>Alias</b>	Protein FDC; CD223
<b>Product Type</b>	Recombinant Protein
<b>Immunogen Species</b>	Homo sapiens (Human)
<b>Purity</b>	Greater than 90% as determined by SDS-PAGE.
<b>Sequence</b>	VPVVWAQEGAPAQLPCSPTIPLQDLSLLRRAGVTWQHQPDSGPPAAAPGHPL APGPHPAAPSSWGPRPRRYTVLSVGGGLRSGRLPLQPRVQLDERGRQRGD FSLWLRPARRADAGEYRAAVHLRDRALSCRLRLRLGQASMTASPPGSLRASD WVILNCSFSRPDRPASVHWFRNRGQGRVPVRESPHHHLAESFLFLPQVSPM DSGPWGCILTYRDGFNVSIMYNLTVLGLEPPTPLTVYAGAGSRVGLPCRLPAG VGTRSFLTAKWTPPGGGPDLLVTGDNGDFTLRLEDVSQAQAGTYTCHIHLE QQLNATVTLAIIIVTPKSFSGSPGSLGKLLCEVTPVSGQERFVWSSLDTPSQRSF SGPWLEAQEAQLLSQPWQCQLYQGERLLGAAVYFTELSSPGAQRSGRAPGA LPAGHL
<b>Research Area</b>	Immunology
<b>Source</b>	E.coli
<b>Target Names</b>	LAG3
<b>Expression Region</b>	29-450aa
<b>Notes</b>	Repeated freezing and thawing is not recommended. Store working aliquots at 4°C for up to one week.
<b>Tag Info</b>	N-terminal 6xHis-GST-tagged
<b>Mol. Weight</b>	75.6kDa
<b>Protein Length</b>	Extracellular Domain
<b>Image</b>	



(Tris-Glycine gel) Discontinuous SDS-PAGE (reduced) with 5% enrichment gel and 15% separation gel.



Based on the SEQUEST from database of E.coli host and target protein, the LC-MS/MS Analysis result of CSB-EP012719HU1 could indicate that this peptide derived from E.coli-expressed Homo sapiens (Human) LAG3.



Based on the SEQUEST from database of E.coli host and target protein, the LC-MS/MS Analysis result of CSB-EP012719HU1 could indicate that this peptide derived from E.coli-expressed Homo sapiens (Human) LAG3.

## Reconstitution

We recommend that this vial be briefly centrifuged prior to opening to bring the contents to the bottom. Please reconstitute protein in deionized sterile water to a concentration of 0.1-1.0 mg/mL. We recommend to add 5-50% of glycerol (final concentration) and aliquot for long-term storage at -20°C/-80°C. Our default final concentration of glycerol is 50%. Customers could use it as reference.

## Shelf Life

The shelf life is related to many factors, storage state, buffer ingredients, storage temperature and the stability of the protein itself. Generally, the shelf life of liquid form is 6 months at -20°C/-80°C. The shelf life of lyophilized form is 12 months at -20°C/-80°C.