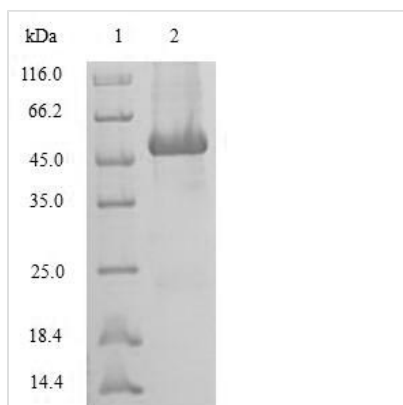




Recombinant Human Sorcin (SRI)

Product Code	CSB-EP022665HU
Relevance	Calcium-binding protein that modulates excitation-contraction coupling in the heart. Contributes to calcium homeostasis in the heart sarcoplasmic reticulum. Modulates the activity of RYR2 calcium channels.
Abbreviation	Recombinant Human SRI protein
Storage	The shelf life is related to many factors, storage state, buffer ingredients, storage temperature and the stability of the protein itself. Generally, the shelf life of liquid form is 6 months at -20°C/-80°C. The shelf life of lyophilized form is 12 months at -20°C/-80°C.
Uniprot No.	P30626
Alias	22 kDa protein CP-22
Product Type	Recombinant Protein
Immunogen Species	Homo sapiens (Human)
Purity	≥ 90% as determined by SDS-PAGE.
Sequence	MAYPGHPGAGGGYYPGGYGGAPGGPAFFPGQTQDPLYGYFAAVAGQDQGID ADELQRCLTQSGIAGGYKPFNLETCLMVSMLDRDMSGTMGFNEFKELWAVL NGWRQHFI SFD TDRSGTVDPQELQKALTTMGFRLSPQAVNSIAKRYSTNGKIT FDDYIACCVKLRAL TDSFRRRDTAQQGVVNFYDDFIQCVMSV
Research Area	Signal Transduction
Source	E.coli
Target Names	SRI
Protein Names	Recommended name: Sorcin Alternative name(s): 22 kDa protein CP-22 Short name= CP22 V19
Expression Region	1-198aa
Notes	Repeated freezing and thawing is not recommended. Store working aliquots at 4°C for up to one week.
Tag Info	N-terminal GST-tagged
Mol. Weight	48.7kDa
Protein Length	Full Length
Image	



(Tris-Glycine gel) Discontinuous SDS-PAGE (reduced) with 5% enrichment gel and 15% separation gel.

Reconstitution

We recommend that this vial be briefly centrifuged prior to opening to bring the contents to the bottom. Please reconstitute protein in deionized sterile water to a concentration of 0.1-1.0 mg/mL. We recommend to add 5-50% of glycerol (final concentration) and aliquot for long-term storage at -20°C/-80°C. Our default final concentration of glycerol is 50%. Customers could use it as reference.

Shelf Life

The shelf life is related to many factors, storage state, buffer ingredients, storage temperature and the stability of the protein itself. Generally, the shelf life of liquid form is 6 months at -20°C/-80°C. The shelf life of lyophilized form is 12 months at -20°C/-80°C.