



Recombinant Mouse L-dopachrome tautomerase (Dct), partial

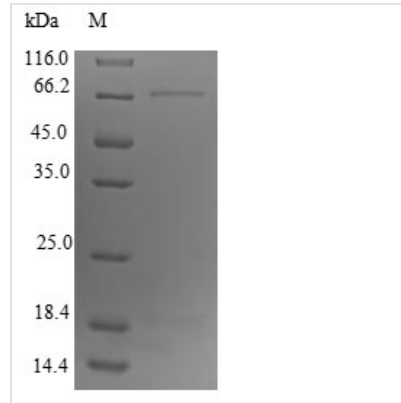
Product Code	CSB-EP006562MO1
Relevance	Catalyzes the conversion of L-dopachrome into 5,6-dihydroxyindole-2-carboxylic acid (DHICA) (PubMed:1537333). Involved in regulating eumelanin and phaeomelanin levels.
Abbreviation	Recombinant Mouse Dct protein, partial
Storage	The shelf life is related to many factors, storage state, buffer ingredients, storage temperature and the stability of the protein itself. Generally, the shelf life of liquid form is 6 months at -20°C/-80°C. The shelf life of lyophilized form is 12 months at -20°C/-80°C.
Uniprot No.	P29812
Alias	DOPAchrome conversion factor1 DOPAchrome isomerase1 DOPAchrome oxidoreductase1 L-dopachrome Delta-isomerase SLATY locus protein Tyrosinase-related protein 2
Product Type	Recombinant Protein
Immunogen Species	Mus musculus (Mouse)
Purity	Greater than 90% as determined by SDS-PAGE.
Sequence	QFPRVCM TLDGVLNKECCPPLGPEATNICGFLEGRGQCAEVQTDTRPWSGP YILRNQDDREQWPRKFFNRTCKCTGNFAGYNCGGCKFGWTGPDCNRKKPAI LRRNIHSLTAQEREQFLGALDLAKKSIHPDYVITTHWLGLLGPNGTQPQIANC SVYDFFVWLHYYSVRD TLLGPGRPYKAIDFSHQGPAFVTWHRYHLLWLEREL QRLTGNESFALPYWNFATGKNECDVCTDELLGAARQDDPTLISRNSRFSTWEI VCDLDDYNRRVTL CNGTYEGLLRNKNVGRNNEKLPTLKNVQDCLSLQKFDS PPFFQNSTFSFRNALEGFDKADGTLDSQVMNLHNLAHSFLNGTNALPHSAAN DPVFVVLHSFTDAIFDEWLKRNNPSTDAWPQELAPIGHNRMYNMVPFFPPVT NEELFLTAEQLGYNYAVDLSEEEAPVWSTTLS
Research Area	Cell Biology
Source	E.coli
Target Names	Dct
Protein Names	Recommended name: L-dopachrome tautomerase Short name= DCT Short name= DT EC= 5.3.3.12 Alternative name(s): L-dopachrome Delta-isomerase SLATY locus protein Tyrosinase-related protein 2 Short name= TRP-2 Short name=
Expression Region	24-472aa
Notes	Repeated freezing and thawing is not recommended. Store working aliquots at 4°C for up to one week.
Tag Info	N-terminal 10xHis-SUMO-tagged



Mol. Weight 69.7kDa

Protein Length Partial

Image



(Tris-Glycine gel) Discontinuous SDS-PAGE (reduced) with 5% enrichment gel and 15% separation gel.

Reconstitution

We recommend that this vial be briefly centrifuged prior to opening to bring the contents to the bottom. Please reconstitute protein in deionized sterile water to a concentration of 0.1-1.0 mg/mL. We recommend to add 5-50% of glycerol (final concentration) and aliquot for long-term storage at -20°C/-80°C. Our default final concentration of glycerol is 50%. Customers could use it as reference.

Shelf Life

The shelf life is related to many factors, storage state, buffer ingredients, storage temperature and the stability of the protein itself. Generally, the shelf life of liquid form is 6 months at -20°C/-80°C. The shelf life of lyophilized form is 12 months at -20°C/-80°C.