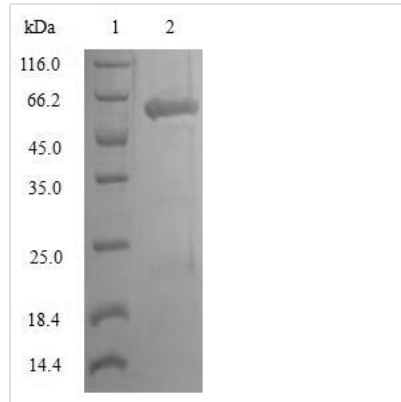


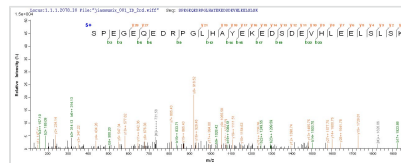


# Recombinant Human Lymphocyte-specific protein 1 (LSP1)

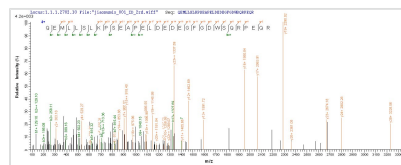
<b>Product Code</b>	CSB-EP013214HU
<b>Relevance</b>	May play a role in mediating neutrophil activation and chemotaxis.
<b>Abbreviation</b>	Recombinant Human LSP1 protein
<b>Storage</b>	The shelf life is related to many factors, storage state, buffer ingredients, storage temperature and the stability of the protein itself. Generally, the shelf life of liquid form is 6 months at -20°C/-80°C. The shelf life of lyophilized form is 12 months at -20°C/-80°C.
<b>Uniprot No.</b>	P33241
<b>Alias</b>	47 kDa actin-binding protein 52 kDa phosphoprotein
<b>Product Type</b>	Recombinant Protein
<b>Immunogen Species</b>	Homo sapiens (Human)
<b>Purity</b>	≥ 90% as determined by SDS-PAGE.
<b>Sequence</b>	MAEASSDPGAEEREELLGPTAQWSVEDEEEAVHEQCQHERDRQLQAQDEE GGGHVPERPKQEMLLSLKPSEAPELDEDEGFGDWSQRPEQRQQHEGAQGT LDSGEPQCRCRSEGEQEDRPGLHAYEKEDSDEVHLEELSLSKEGPGPEDTVQ DNLGAAGAEQQEEHQKCCQPRTPSPLVLEGTIEQSSPPLSPTTKLIDRTESL NRSIEKSNSVKKSQPDLPIKIDQWLEQYTQAIETAGRTPKLARQASIELPSMA VASTKSRWETGEVQAQSAAKTPSCKDIVAGDMSKKSLWEQKGGSKTSSTIKS TPSGKRYKFVATGHGKYEKVLVEGGPAP
<b>Research Area</b>	Immunology
<b>Source</b>	E.coli
<b>Target Names</b>	LSP1
<b>Protein Names</b>	Recommended name: Lymphocyte-specific protein 1 Alternative name(s): 47 kDa actin-binding protein 52 kDa phosphoprotein Short name= pp52 Lymphocyte-specific antigen WP34
<b>Expression Region</b>	1-339aa
<b>Notes</b>	Repeated freezing and thawing is not recommended. Store working aliquots at 4°C for up to one week.
<b>Tag Info</b>	N-terminal GST-tagged
<b>Mol. Weight</b>	64.2kDa
<b>Protein Length</b>	Full Length of BC001785
<b>Image</b>	



(Tris-Glycine gel) Discontinuous SDS-PAGE (reduced) with 5% enrichment gel and 15% separation gel.



Based on the SEQUEST from database of E.coli host and target protein, the LC-MS/MS Analysis result of CSB-EP013214HU could indicate that this peptide derived from E.coli-expressed Homo sapiens (Human) LSP1.



Based on the SEQUEST from database of E.coli host and target protein, the LC-MS/MS Analysis result of CSB-EP013214HU could indicate that this peptide derived from E.coli-expressed Homo sapiens (Human) LSP1.

## Reconstitution

We recommend that this vial be briefly centrifuged prior to opening to bring the contents to the bottom. Please reconstitute protein in deionized sterile water to a concentration of 0.1-1.0 mg/mL. We recommend to add 5-50% of glycerol (final concentration) and aliquot for long-term storage at -20°C/-80°C. Our default final concentration of glycerol is 50%. Customers could use it as reference.

## Shelf Life

The shelf life is related to many factors, storage state, buffer ingredients, storage temperature and the stability of the protein itself.

Generally, the shelf life of liquid form is 6 months at -20°C/-80°C. The shelf life of lyophilized form is 12 months at -20°C/-80°C.