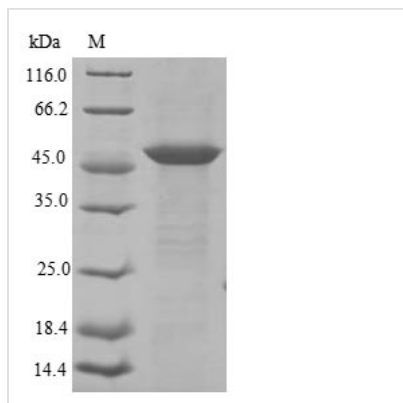




Recombinant Rat Heat-stable enterotoxin receptor (Gucy2c), partial

Product Code	CSB-EP010053RA
Abbreviation	Recombinant Rat Gucy2c protein, partial
Storage	The shelf life is related to many factors, storage state, buffer ingredients, storage temperature and the stability of the protein itself. Generally, the shelf life of liquid form is 6 months at -20°C/-80°C. The shelf life of lyophilized form is 12 months at -20°C/-80°C.
Uniprot No.	P23897
Product Type	Recombinant Protein
Immunogen Species	Rattus norvegicus (Rat)
Purity	≥ 85% as determined by SDS-PAGE.
Sequence	SQVRQKCHNGTYEISVLMMDNSAYKEPLQNLRDVEEGLDIVRKRLREAELNV TVNATFIYSDGLIHKSGDCRSSTCEGLDLLREITRDRKMGCVLMGSPCTYSTF QMYLDTELNYPMISAGSFGLSCDYKETLTRILPPARKLMYFLVDFWKVNNAPF KTFSSWNSSYVYKNGSEPEDCFWYLNALAEAGVSYFSEVLSFKDVLRRSEQFQE ILMGRNRKSNVIVMCGTPETFYNVKGDLKVADDTVVLVDFSNHYFEDDTRAP EYMDNVLVLTLPPEKFIANASVSGRFPSESRSDFLAYLEGTLFGHMLQTFLEN GESVTPPKFARAFRNLTQGLEGPVTLDDSGDIDNIMCLLYVSLDTRKYKVLMA YDTHKNQTIPVATSPNFIWKNHRLPNDVPLGPQ
Research Area	Microbiology
Source	E.coli
Target Names	Gucy2c
Protein Names	Recommended name: Heat-stable enterotoxin receptor Short name= STA receptor EC= 4.6.1.2 Alternative name(s): Guanylyl cyclase C Short name= GC- C Intestinal guanylate cyclase
Expression Region	23-429aa
Notes	Repeated freezing and thawing is not recommended. Store working aliquots at 4°C for up to one week.
Tag Info	N-terminal 6xHis-tagged and C-terminal Myc-tagged
Mol. Weight	51.9 kDa
Protein Length	Partial
Image	



(Tris-Glycine gel) Discontinuous SDS-PAGE (reduced) with 5% enrichment gel and 15% separation gel.

Reconstitution

We recommend that this vial be briefly centrifuged prior to opening to bring the contents to the bottom. Please reconstitute protein in deionized sterile water to a concentration of 0.1-1.0 mg/mL. We recommend to add 5-50% of glycerol (final concentration) and aliquot for long-term storage at $-20^{\circ}\text{C}/-80^{\circ}\text{C}$. Our default final concentration of glycerol is 50%. Customers could use it as reference.

Shelf Life

The shelf life is related to many factors, storage state, buffer ingredients, storage temperature and the stability of the protein itself. Generally, the shelf life of liquid form is 6 months at $-20^{\circ}\text{C}/-80^{\circ}\text{C}$. The shelf life of lyophilized form is 12 months at $-20^{\circ}\text{C}/-80^{\circ}\text{C}$.