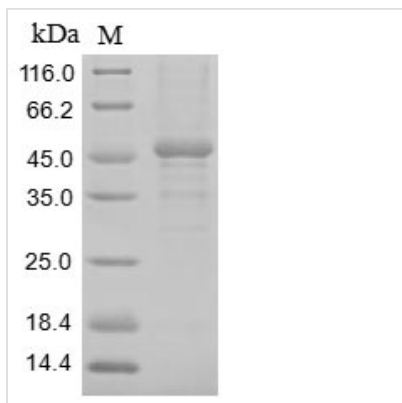




# Recombinant Rat Heat-stable enterotoxin receptor (Gucy2c), partial

<b>Product Code</b>	CSB-BP010053RA
<b>Relevance</b>	Receptor for the E.coli heat-stable enterotoxin (E.coli enterotoxin markedly stimulates the accumulation of cGMP in mammalian cells expressing GC-C). Also activated by the endogenous peptide guanylin.
<b>Abbreviation</b>	Recombinant Rat Gucy2c protein, partial
<b>Storage</b>	The shelf life is related to many factors, storage state, buffer ingredients, storage temperature and the stability of the protein itself. Generally, the shelf life of liquid form is 6 months at -20°C/-80°C. The shelf life of lyophilized form is 12 months at -20°C/-80°C.
<b>Uniprot No.</b>	P23897
<b>Product Type</b>	Recombinant Protein
<b>Immunogen Species</b>	Rattus norvegicus (Rat)
<b>Purity</b>	Greater than 85% as determined by SDS-PAGE.
<b>Sequence</b>	SQVRQKCHNGTYEISVLMMDNSAYKEPLQNLRDVEEGLDIVRKRLREAELNV TVNATFIYSDGLIHKSGDCRSSTCEGLDLLREITRDRKMGCVLMGSPCTYSTF QMYLDTELNYPMISAGSFGLSCDYKETLTRLPPARKLMYFLVDFWKVNNAPF KTFSWNSSYVYKNGSEPEDCFWYLNALAEAGVSYFSEVLSFKDVLRRSEQFQE ILMGRNRKSNVIVMCGTPETFYNVKGDLKVADDTVVILVDLFSNHYFEDDTRAP EYMDNVLVLTLPPEKFIANASVSGRFPSESRSDFLAYLEGTLFFGHMLQTFLEN GESVTPKFAFRNLTFQGLEGPVTLDDSGDIDNIMCLLYVSLDTRKYKVLMA YDTHKNQTIPVATSPNFIWKNHRLPNDVPGLGPQ
<b>Research Area</b>	Microbiology
<b>Source</b>	Baculovirus
<b>Target Names</b>	Gucy2c
<b>Protein Names</b>	Guanylyl cyclase C (GC-C) (Intestinal guanylate cyclase) (Guc2c)
<b>Expression Region</b>	23-429aa
<b>Notes</b>	Repeated freezing and thawing is not recommended. Store working aliquots at 4°C for up to one week.
<b>Tag Info</b>	N-terminal 10xHis-tagged and C-terminal Myc-tagged
<b>Mol. Weight</b>	50.4 kDa
<b>Protein Length</b>	Extracellular Domain
<b>Image</b>	



(Tris-Glycine gel) Discontinuous SDS-PAGE (reduced) with 5% enrichment gel and 15% separation gel.

### Reconstitution

We recommend that this vial be briefly centrifuged prior to opening to bring the contents to the bottom. Please reconstitute protein in deionized sterile water to a concentration of 0.1-1.0 mg/mL. We recommend to add 5-50% of glycerol (final concentration) and aliquot for long-term storage at -20°C/-80°C. Our default final concentration of glycerol is 50%. Customers could use it as reference.

### Shelf Life

The shelf life is related to many factors, storage state, buffer ingredients, storage temperature and the stability of the protein itself. Generally, the shelf life of liquid form is 6 months at -20°C/-80°C. The shelf life of lyophilized form is 12 months at -20°C/-80°C.