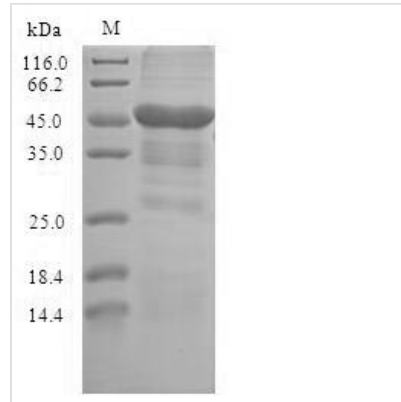




Recombinant Human Erythrocyte band 7 integral membrane protein (STOM)

Product Code	CSB-EP022862HU
Relevance	Regulates ion channel activity and transmembrane ion transport. Regulates ASIC2 and ASIC3 channel activity.
Abbreviation	Recombinant Human STOM protein
Storage	The shelf life is related to many factors, storage state, buffer ingredients, storage temperature and the stability of the protein itself. Generally, the shelf life of liquid form is 6 months at -20°C/-80°C. The shelf life of lyophilized form is 12 months at -20°C/-80°C.
Uniprot No.	P27105
Alias	Protein 7.2b Stomatin
Product Type	Recombinant Protein
Immunogen Species	Homo sapiens (Human)
Purity	Greater than 90% as determined by SDS-PAGE.
Sequence	MAEKRHTRDSEAQRLPDSFKDSPSKGLGPCGWILVAFSFLFTVITFPISIWMCIKIIKEYERAIIFRLGRILQGGAKGPGLFFILPCTDSFIKVD MRTISFDIPPQEILTKDSVTISVDG VVYYRVQNATLAVANITNADSATRLLAQTTLRNVLGTKNLSQILSDREEIAHNMQSTLDDATDAWGIVKVERVEIKDVKLPVQLQRAMAAEAEASREARAKVIAAEGEMNASRALKEASMVITESPAALQLRYLQTLTTIAAEKNSTIVFPLPIDMLQGII GAKHSHLG
Research Area	Neuroscience
Source	E.coli
Target Names	STOM
Protein Names	Recommended name: Erythrocyte band 7 integral membrane protein Alternative name(s): Protein 7.2b Stomatin
Expression Region	1-288aa
Notes	Repeated freezing and thawing is not recommended. Store working aliquots at 4°C for up to one week.
Tag Info	N-terminal 6xHis-SUMO-tagged
Mol. Weight	47.7kDa
Protein Length	Full Length
Image	



(Tris-Glycine gel) Discontinuous SDS-PAGE (reduced) with 5% enrichment gel and 15% separation gel.

Reconstitution

We recommend that this vial be briefly centrifuged prior to opening to bring the contents to the bottom. Please reconstitute protein in deionized sterile water to a concentration of 0.1-1.0 mg/mL. We recommend to add 5-50% of glycerol (final concentration) and aliquot for long-term storage at -20°C/-80°C. Our default final concentration of glycerol is 50%. Customers could use it as reference.

Shelf Life

The shelf life is related to many factors, storage state, buffer ingredients, storage temperature and the stability of the protein itself. Generally, the shelf life of liquid form is 6 months at -20°C/-80°C. The shelf life of lyophilized form is 12 months at -20°C/-80°C.