

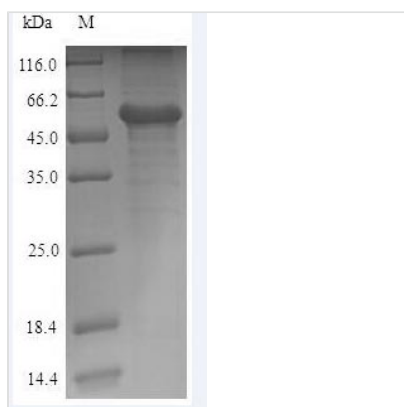


Recombinant Human Calreticulin (CALR)

| | |
|--------------------------|---|
| Product Code | CSB-EP004458HU |
| Relevance | Calcium-binding chaperone that promotes folding, oligomeric assembly and quality control in the endoplasmic reticulum (ER) via the calreticulin/calnexin cycle. This lectin interacts transiently with almost all of the monoglucosylated glycoproteins that are synthesized in the ER. Interacts with the DNA-binding domain of NR3C1 and mediates its nuclear export. Involved in maternal gene expression regulation. May participate in oocyte maturation via the regulation of calcium homeostasis |
| Abbreviation | Recombinant Human CALR protein |
| Storage | The shelf life is related to many factors, storage state, buffer ingredients, storage temperature and the stability of the protein itself. Generally, the shelf life of liquid form is 6 months at -20°C/-80°C. The shelf life of lyophilized form is 12 months at -20°C/-80°C. |
| Uniprot No. | P27797 |
| Alias | CRP55 Calregulin Endoplasmic reticulum resident protein 60 |
| Product Type | Recombinant Protein |
| Immunogen Species | Homo sapiens (Human) |
| Purity | ≥ 90% as determined by SDS-PAGE. |
| Sequence | EPAVYFKEQFLDGGDGTSRWIESKHKSDFGKFLVSSGKFGDEEKDKGLQTS QDARFYALSASFEPFSNKGQTLVVQFTVKHEQNIDCGGGYVKLFPNSLDQTD MHGDSEYNIMFGPDICGPGTKKVHVIFNYKGNVLINKDIRCKDDEFTHLYTLIV RPDNTYEVKIDNSQVESGSLEDDWDFLPPKKIKDPDASKPEDWDERAKIDDPT DSKPEDWDKPEHIPDPDAKKPEDWDEEMDGEWEPPVIQNPEYKGEWKPRQI DNPDYKGTWIHPEIDNPEYSPDPSIAYDNFGVLGLDLWQVKSQTIFDNFLITN DEAYAEFFGNETWGVTKAAEKQMKDKQDEEQRLKEEEEDKKRKEEEEAEDK EDEDKDEDEEDEDKEEDEEEDVPGQAKDEL |
| Research Area | Tags & Cell Markers |
| Source | E.coli |
| Target Names | CALR |
| Protein Names | Recommended name: Calreticulin Alternative name(s): CRP55 Calregulin Endoplasmic reticulum resident protein 60 Short name= ERp60 HACBP grp60 |
| Expression Region | 18-417aa |
| Notes | Repeated freezing and thawing is not recommended. Store working aliquots at 4°C for up to one week. |
| Tag Info | N-terminal 6xHis-tagged |
| Mol. Weight | 50.6kDa |
| Protein Length | Full Length of Mature Protein |



Image



(Tris-Glycine gel) Discontinuous SDS-PAGE (reduced) with 5% enrichment gel and 15% separation gel.

Reconstitution

We recommend that this vial be briefly centrifuged prior to opening to bring the contents to the bottom. Please reconstitute protein in deionized sterile water to a concentration of 0.1-1.0 mg/mL. We recommend to add 5-50% of glycerol (final concentration) and aliquot for long-term storage at -20°C/-80°C. Our default final concentration of glycerol is 50%. Customers could use it as reference.

Shelf Life

The shelf life is related to many factors, storage state, buffer ingredients, storage temperature and the stability of the protein itself.

Generally, the shelf life of liquid form is 6 months at -20°C/-80°C. The shelf life of lyophilized form is 12 months at -20°C/-80°C.