



Recombinant Human ATP-dependent DNA helicase Q1 (RECQL)

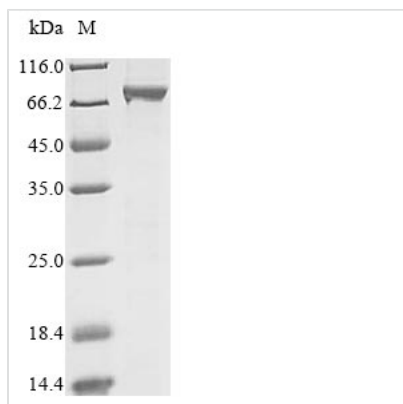
Product Code	CSB-BP019537HU
Relevance	DNA helicase that may play a role in the repair of DNA that is damaged by ultraviolet light or other mutagens. Exhibits a magnesium-dependent ATP-dependent DNA-helicase activity that unwinds single- and double-stranded DNA in a 3'-5' direction.
Abbreviation	Recombinant Human RECQL protein
Storage	The shelf life is related to many factors, storage state, buffer ingredients, storage temperature and the stability of the protein itself. Generally, the shelf life of liquid form is 6 months at -20°C/-80°C. The shelf life of lyophilized form is 12 months at -20°C/-80°C.
Uniprot No.	P46063
Product Type	Recombinant Protein
Immunogen Species	Homo sapiens (Human)
Purity	Greater than 85% as determined by SDS-PAGE.
Sequence	MASVSALTEELDSITSELHAVEIQIQELTERQQELIQKKKVLTKKIKQCLESDA GASNEYDSSPAAWNKEDFPWSGKVKDILQNVFKLEKFRPLQLETINVTMAGKE VFLVMPTGGGKSLCYQLPALCSDGFTLVICPLISLMEDQLMVLKQLGISATMLN ASSSKEHVKVVHAEMVKNKSELKLIYVTPEKIAKSKMFMSRLEKAYEARRFTRI AVDEVHCCSQWGHDFRPDYKALGILKRQFPNASLIGLTATATNHVLTDAQKILC IEKCFTFTASFNRPNLYEVRQKPSNTEDFIEDIVKLINGRYKGGQSGIYCFSQK DSEQVTVSLQNLGIHAGAYHANLEPEDKTTVHRKWSANEIQVVVATVAFGMGI DKPDVRFVIHHSMSKSMENYYQESGRAGRDDMKADCILYYGFGDIFRISSMVV MENVGQQKLYEMVSYCQNISKCRRVLMQAQHFDEVWNSEACNKMCDNCKD SAFERKNITEYCRDLIKLKQAEELNEKLTPLKLIDSWMGKGAALKRVAGVVAPT LPREDLEKIIAHFLIQYLKEDYSFTAYATISYKIGPKANLLNNEAHAITMQVTK STQNSFRAESSQTCHSEQGDKKMEEKNSGNFQKKAANMLQQSGSKNTGAKK RKIDDA
Research Area	Epigenetics and Nuclear Signaling
Source	Baculovirus
Target Names	RECQL
Protein Names	DNA helicase, RecQ-like type 1 Short name: RecQ1 DNA-dependent ATPase Q1 RecQ protein-like 1 RECQ1, RECQL1
Expression Region	1-649aa
Notes	Repeated freezing and thawing is not recommended. Store working aliquots at 4°C for up to one week.
Tag Info	N-terminal 10xHis-tagged



Mol. Weight 76.0 kDa

Protein Length Full Length

Image



(Tris-Glycine gel) Discontinuous SDS-PAGE (reduced) with 5% enrichment gel and 15% separation gel.

Reconstitution

We recommend that this vial be briefly centrifuged prior to opening to bring the contents to the bottom. Please reconstitute protein in deionized sterile water to a concentration of 0.1-1.0 mg/mL. We recommend to add 5-50% of glycerol (final concentration) and aliquot for long-term storage at -20°C/-80°C. Our default final concentration of glycerol is 50%. Customers could use it as reference.

Shelf Life

The shelf life is related to many factors, storage state, buffer ingredients, storage temperature and the stability of the protein itself. Generally, the shelf life of liquid form is 6 months at -20°C/-80°C. The shelf life of lyophilized form is 12 months at -20°C/-80°C.