

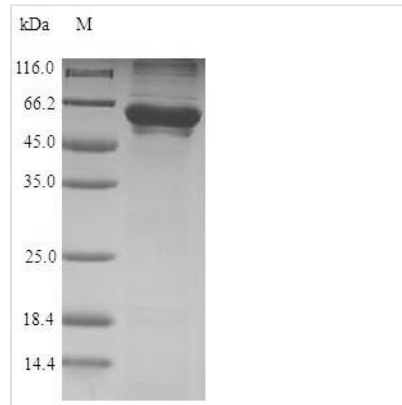


Recombinant Human T-complex protein 1 subunit zeta (CCT6A)

Product Code	CSB-EP004865HU
Relevance	Molecular chaperone; assists the folding of proteins upon ATP hydrolysis. Known to play a role, in vitro, in the folding of actin and tubulin.
Abbreviation	Recombinant Human CCT6A protein
Storage	The shelf life is related to many factors, storage state, buffer ingredients, storage temperature and the stability of the protein itself. Generally, the shelf life of liquid form is 6 months at -20°C/-80°C. The shelf life of lyophilized form is 12 months at -20°C/-80°C.
Uniprot No.	P40227
Alias	Acute morphine dependence-related protein 2 CCT-zeta-1 HTR3 Tcp20
Product Type	Recombinant Protein
Immunogen Species	Homo sapiens (Human)
Purity	Greater than 90% as determined by SDS-PAGE.
Sequence	AAVKTLNPKAEVARAQAALAVNISAARGLQDVLRTNLGPKGTMKMLVSGAGDI KLTKDGNVLLHEMQIQHPTASLIAKVATAQDDITGDGTTSNVLIIGELLKQADLYI SEGLHPRIITEGFEEAAKEKALQFLEEVKVSREMDRETLIDVARTSLRTRKVHAE LADVLTEAVVDSILAIKKQDEPIDLFMIEIMEMKHKSETDTSIRGLVLDHGARHPD MKKRVEDAYILTCNVSLEYEKTEVNSGFFYKSAEEREKLVKAERKFIEDRVKKII ELKRKVCGDSDKGFVVINQKGIDPFSLDALSKEGIVALRRAKRRNMERLTLAC GGVALNSFDDLSPDCLGHAGLVYEYTLGEEKFTFIEKCNNPRSVTLLIKGPNKH TLTQIKDAVRDGLRAVKNAIDDDGCVVPGAGAVEVAMAEALIKHKPSVKGRAQL GVQAFADALLIIPKVLQNSGFDLQETLVKIQAEHSESGQLVGVLDLNTGEPMVA AEVGVWDNYCVKKQLLHSTVIATNILLVDEIMRAGMSSLKG
Research Area	Others
Source	E.coli
Target Names	CCT6A
Protein Names	Recommended name: T-complex protein 1 subunit zeta Short name= TCP-1-zeta Alternative name(s): Acute morphine dependence-related protein 2 CCT-zeta-1 HTR3 Tcp20
Expression Region	2-531aa
Notes	Repeated freezing and thawing is not recommended. Store working aliquots at 4°C for up to one week.
Tag Info	N-terminal 6xHis-tagged
Mol. Weight	61.9kDa
Protein Length	Full Length of Mature Protein



Image



(Tris-Glycine gel) Discontinuous SDS-PAGE (reduced) with 5% enrichment gel and 15% separation gel.

Reconstitution

We recommend that this vial be briefly centrifuged prior to opening to bring the contents to the bottom. Please reconstitute protein in deionized sterile water to a concentration of 0.1-1.0 mg/mL. We recommend to add 5-50% of glycerol (final concentration) and aliquot for long-term storage at -20°C/-80°C. Our default final concentration of glycerol is 50%. Customers could use it as reference.

Shelf Life

The shelf life is related to many factors, storage state, buffer ingredients, storage temperature and the stability of the protein itself.

Generally, the shelf life of liquid form is 6 months at -20°C/-80°C. The shelf life of lyophilized form is 12 months at -20°C/-80°C.