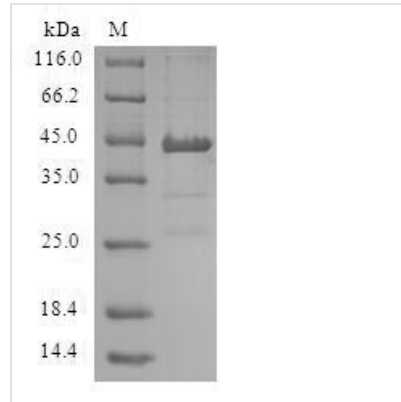




# Recombinant Human Low molecular weight phosphotyrosine protein phosphatase (ACP1)

<b>Product Code</b>	CSB-EP001176HU
<b>Relevance</b>	Acts on tyrosine phosphorylated proteins, low-MW aryl phosphates and natural and synthetic acyl phosphates. Isoform 3 does not possess phosphatase activity.
<b>Abbreviation</b>	Recombinant Human ACP1 protein
<b>Storage</b>	The shelf life is related to many factors, storage state, buffer ingredients, storage temperature and the stability of the protein itself. Generally, the shelf life of liquid form is 6 months at -20°C/-80°C. The shelf life of lyophilized form is 12 months at -20°C/-80°C.
<b>Uniprot No.</b>	P24666
<b>Alias</b>	Adipocyte acid phosphatase Low molecular weight cytosolic acid phosphatase (EC:3.1.3.2) Red cell acid phosphatase 1
<b>Product Type</b>	Recombinant Protein
<b>Immunogen Species</b>	Homo sapiens (Human)
<b>Purity</b>	≥ 90% as determined by SDS-PAGE.
<b>Sequence</b>	MAEQATKSVLFFVCLGNICRSPIAEAVFRKLVTDQNISENWRVDSAATSGYEIGN PPDYRGQSCMKRHGIPMSHVARQITKEDFATFDYILCMDESNLRLDLNRKSNQ VKTCKAKIELLSYDPQKQLIIEDPYYGNDSDFETVYQQCVRCCRAFLEKAH
<b>Research Area</b>	Cell Biology
<b>Source</b>	E.coli
<b>Target Names</b>	ACP1
<b>Protein Names</b>	Recommended name: Low molecular weight phosphotyrosine protein phosphatase Short name= LMW-PTP Short name= LMW-PTPase EC= 3.1.3.48Alternative name(s): Adipocyte acid phosphatase Low molecular weight cytosolic acid phosphatase
<b>Expression Region</b>	1-158aa
<b>Notes</b>	Repeated freezing and thawing is not recommended. Store working aliquots at 4°C for up to one week.
<b>Tag Info</b>	N-terminal GST-tagged
<b>Mol. Weight</b>	45.0kDa
<b>Protein Length</b>	Full Length of Isoform 1
<b>Image</b>	



(Tris-Glycine gel) Discontinuous SDS-PAGE (reduced) with 5% enrichment gel and 15% separation gel.

### Reconstitution

We recommend that this vial be briefly centrifuged prior to opening to bring the contents to the bottom. Please reconstitute protein in deionized sterile water to a concentration of 0.1-1.0 mg/mL. We recommend to add 5-50% of glycerol (final concentration) and aliquot for long-term storage at -20°C/-80°C. Our default final concentration of glycerol is 50%. Customers could use it as reference.

### Shelf Life

The shelf life is related to many factors, storage state, buffer ingredients, storage temperature and the stability of the protein itself. Generally, the shelf life of liquid form is 6 months at -20°C/-80°C. The shelf life of lyophilized form is 12 months at -20°C/-80°C.