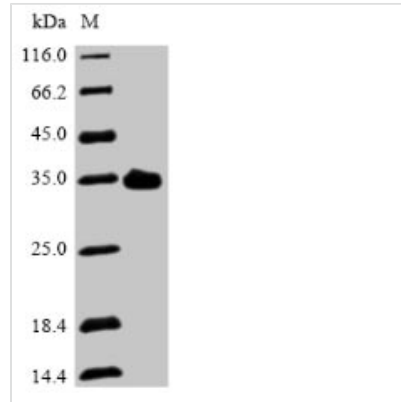




Recombinant Mouse Asialoglycoprotein receptor 2 (Asgr2), partial

Product Code	CSB-EP002208MO1
Relevance	Mediates the endocytosis of plasma glycoproteins to which the terminal sialic acid residue on their complex carbohydrate moieties has been removed. The receptor recognizes terminal galactose and N-acetylgalactosamine units. After ligand binding to the receptor, the resulting complex is internalized and transported to a sorting organelle, where receptor and ligand are disassociated. The receptor then returns to the cell membrane surface.
Abbreviation	Recombinant Mouse Asgr2 protein, partial
Storage	The shelf life is related to many factors, storage state, buffer ingredients, storage temperature and the stability of the protein itself. Generally, the shelf life of liquid form is 6 months at -20°C/-80°C. The shelf life of lyophilized form is 12 months at -20°C/-80°C.
Uniprot No.	P24721
Product Type	Recombinant Protein
Immunogen Species	Mus musculus (Mouse)
Purity	≥ 85% as determined by SDS-PAGE.
Sequence	QSIQLQEEFRTLKETFSNFSSSTLMFEFGALDTLGGSTNAILTSWLAQLEEKQQQ LKADHSTLLFHLKHFPMDLRTLTCQLAYFQSNNGTECCPVNWVEFGGSCYWFS RDGLTWAADQYCQLENAHLLVINSREEQDFVVKHRSQFHIWIGLTDRDGSW KWVDGTDYRSNYRNWAFTQPDNWQGHEQGGGEDCAEILSDGHWNDNFCQ QVNRWVCEKRRNITH
Research Area	Signal Transduction
Source	E.coli
Target Names	Asgr2
Protein Names	Hepatic lectin 2 Short name: HL-2 Short name: mHL-2 Asgr-2
Expression Region	80-301aa
Notes	Repeated freezing and thawing is not recommended. Store working aliquots at 4°C for up to one week.
Tag Info	N-terminal 10xHis-tagged and C-terminal Myc-tagged
Mol. Weight	29.9 kDa
Protein Length	Extracellular Domain
Image	



(Tris-Glycine gel) Discontinuous SDS-PAGE (reduced) with 5% enrichment gel and 15% separation gel.

Reconstitution

We recommend that this vial be briefly centrifuged prior to opening to bring the contents to the bottom. Please reconstitute protein in deionized sterile water to a concentration of 0.1-1.0 mg/mL. We recommend to add 5-50% of glycerol (final concentration) and aliquot for long-term storage at -20°C/-80°C. Our default final concentration of glycerol is 50%. Customers could use it as reference.

Shelf Life

The shelf life is related to many factors, storage state, buffer ingredients, storage temperature and the stability of the protein itself. Generally, the shelf life of liquid form is 6 months at -20°C/-80°C. The shelf life of lyophilized form is 12 months at -20°C/-80°C.