

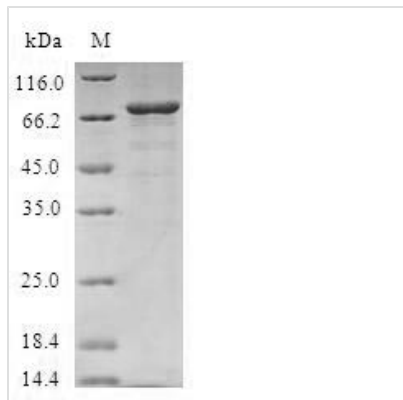


Recombinant Human Protein phosphatase 1A (PPM1A)

Product Code	CSB-EP018489HU
Relevance	Enzyme with a broad specificity. Negatively regulates TGF-beta signaling through dephosphorylating SMAD2 and SMAD3, resulting in their dissociation from SMAD4, nuclear export of the SMADs and termination of the TGF-beta-mediated signaling. Dephosphorylates PRKAA1 and PRKAA2. Plays an important role in the termination of TNF-alpha-mediated NF-kappa-B activation through dephosphorylating and inactivating IKBKB/IKKB.
Abbreviation	Recombinant Human PPM1A protein
Storage	The shelf life is related to many factors, storage state, buffer ingredients, storage temperature and the stability of the protein itself. Generally, the shelf life of liquid form is 6 months at -20°C/-80°C. The shelf life of lyophilized form is 12 months at -20°C/-80°C.
Uniprot No.	P35813
Alias	Protein phosphatase 2C isoform alpha
Product Type	Recombinant Protein
Immunogen Species	Homo sapiens (Human)
Purity	Greater than 90% as determined by SDS-PAGE.
Sequence	GAFLDKPKMEKHNAQQGQGNGLRYGLSSMQGWVEMEDAHTAVIGLPSGLES WSFFAVYDGHAGSQVAKYCCEHLLDHITNNQDFKGSAGAPSVENVKNGIRTG FLEIDEHMRVMSEKKHGADRSGSTAVGVLISPQHTYFINGDGRLLCRNRKV HFFTQDHPKPSNPLEKERIQNAGGSVMIQRVNGSLAVSRALGDFDYKCVHGKG PTEQLVSPEPEVHDIERSEEDDQFIILACDGIWDVMGNEELCDFVRSRLEVTDD LEKVCNEVVDTCLYKGSRDNMSVILICFPNAPKVSPEAVKKEAELDKYLECRVE EIIKKQGEGVPLVHVMRTLASENIPSLPPGGELASKRNVIEAVYNRLNPNYKND DTDSTSTDDMW
Research Area	Signal Transduction
Source	E.coli
Target Names	PPM1A
Protein Names	Recommended name: Protein phosphatase 1A EC= 3.1.3.16 Alternative name(s): Protein phosphatase 2C isoform alpha Short name= PP2C-alpha Protein phosphatase IA
Expression Region	1-382aa
Notes	Repeated freezing and thawing is not recommended. Store working aliquots at 4°C for up to one week.
Tag Info	N-terminal GST-tagged
Mol. Weight	69.3kDa

**Protein Length**

Full Length

Image

(Tris-Glycine gel) Discontinuous SDS-PAGE (reduced) with 5% enrichment gel and 15% separation gel.

Reconstitution

We recommend that this vial be briefly centrifuged prior to opening to bring the contents to the bottom. Please reconstitute protein in deionized sterile water to a concentration of 0.1-1.0 mg/mL. We recommend to add 5-50% of glycerol (final concentration) and aliquot for long-term storage at -20°C/-80°C. Our default final concentration of glycerol is 50%. Customers could use it as reference.

Shelf Life

The shelf life is related to many factors, storage state, buffer ingredients, storage temperature and the stability of the protein itself. Generally, the shelf life of liquid form is 6 months at -20°C/-80°C. The shelf life of lyophilized form is 12 months at -20°C/-80°C.